



ARAHNE SOFTWARE UPDATES 2018

Fabric design by
Lyontex

TABLE OF CONTENTS



ARAHWEAVE.....	4	16. WEAVE CONVERSION INFORMATION IN HTML DATA SHEET.....	25
1. METALLIC YARN SIMULATION.....	4	17. RANDOM COLORS.....	27
2. FACE AND BACK FABRIC SIMULATION.....	6	18. ADD SECOND LOGO ON THE HTML DATA SHEET.....	29
3. STITCHING POINTS.....	8	19. SETUP HTML DATA SHEET.....	31
4. ARAHWEAVE JACQUARDPro XL.....	10	20. CUSTOM TEXT IN WEFT BLANKET.....	35
5. SUPPORT FOR READING OF CHINESE JACQUARD FORMATS .WBF AND .WB.....	11	21. NEW ARAHWEAVE VIDEO TUTORIALS.....	37
6. QUICKLY CHECK THE WEAVE.....	12	ARAHPAINT.....	38
7. SUPPORT FOR READING MOST DOBBY FABRIC FILES.....	13	1. WORK WITH TRANSPARENT IMAGES.....	38
8. SUPPORT FOR READING JD&N SOFTWARE FABRIC FILES.....	14	2. LOAD COLOR PALETTES AS IMAGES.....	39
9. COLOR PICKER FACE-LIFT.....	15	3. MULTI DOCUMENT SUPPORT.....	40
10. ARAHNE SPEAKS CATALAN.....	16	4. NEW ARAHPAINT VIDEO TUTORIALS.....	41
11. ADD YOUR OWN FIBER CODES.....	17	ARAHDRAPE.....	42
12. UPDATED ARAHWEAVE MANUAL.....	18	1. AUTOMATIC LABELS.....	42
13. MULTIPLAY JACQUARD SIZE TO DIVISIBLE.....	19	2. ADD CUSTOM BACKGROUND COLOR.....	45
14. DUMMY ZERO VARIANT.....	22	NEW APP: TABLET BASED DIGITAL FABRIC CATALOGUE.....	47
15. PERSONALIZE SCREEN AND PRINT FONT.....	23		

The updates presented in this brochure were made from March 2017 until February 2018. We have fixed numerous bugs and implemented 232 new features. Only a small selection of new features is presented in this document.

From March 2017 until February 2018, Arahne software covered the following versions:

- ArahWeave: from version 8.1j till 8.3d
- ArahPaint5: from version 5.0.530 till 5.0.1155
- ArahPaint6: version 6.0.1341
- ArahDrape: from version 3.0g to 3.0q



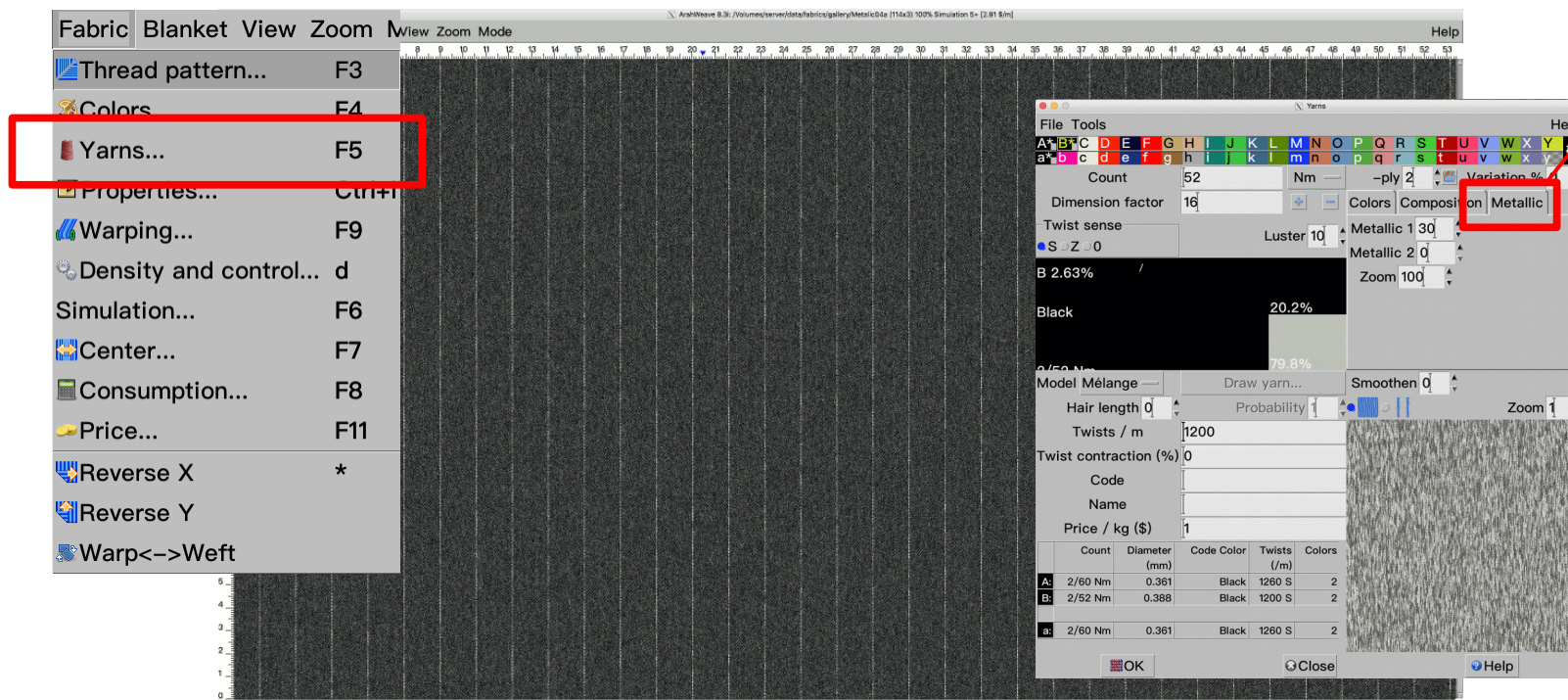
ARAHWEAVE

1. METALLIC YARN SIMULATION

WHAT DOES IT DO?

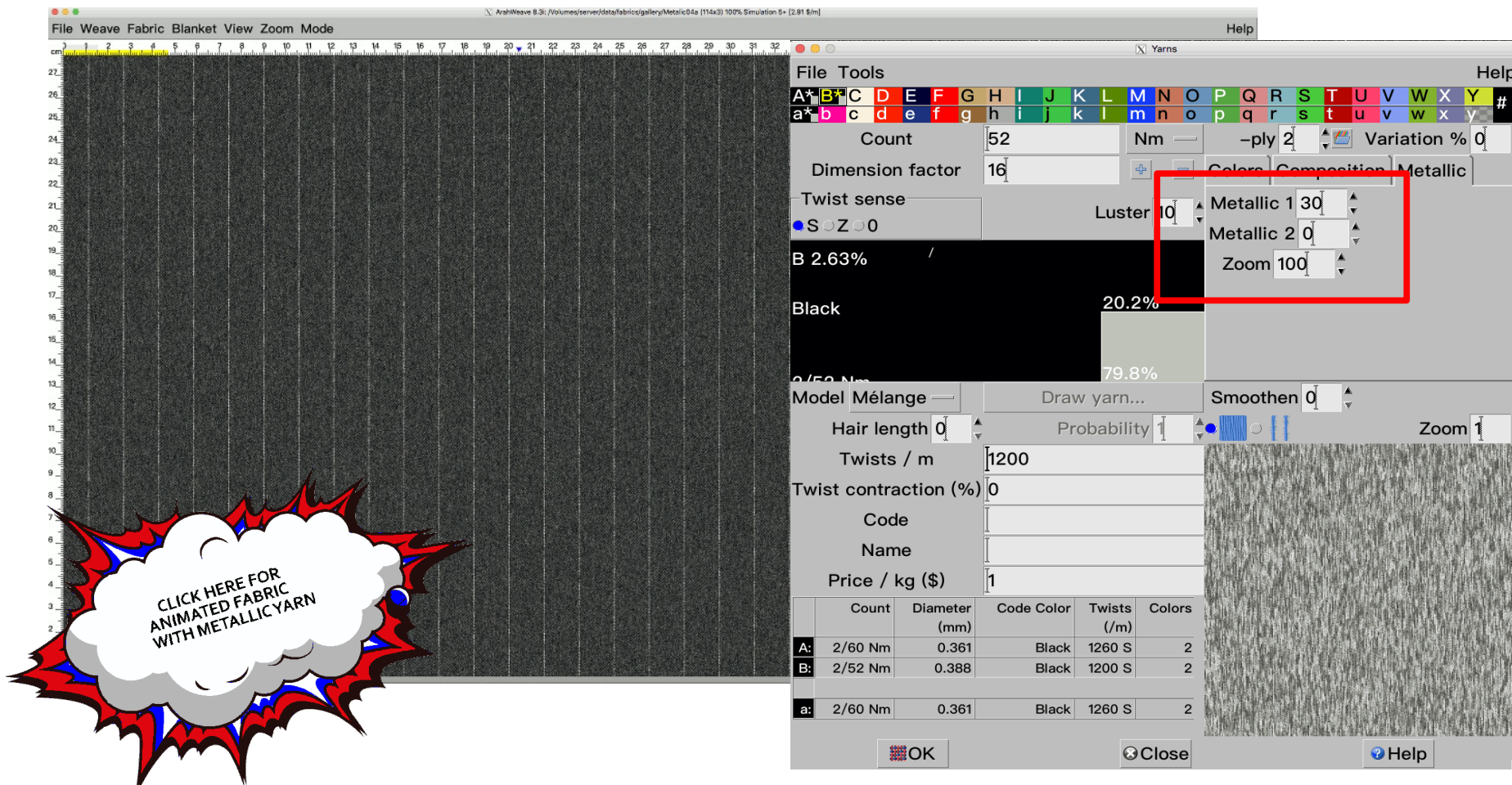
In fabric simulation you can set metallic yarn.

WHERE ? Go to **Fabric > Yarns** and select **Metallic** tab.



HOWTO USE IT?

Select the yarn and set the parameters under the **Metallic** tab: **Metallic** for light to dark color intensity and **Zoom** for the rate of changes of metallic yarn. Shorter zoom gives the pixie powder effect, longer zoom gives the effect of slowly turning metallic yarn.



2. FACE AND BACK FABRIC SIMULATION PRINTOUT

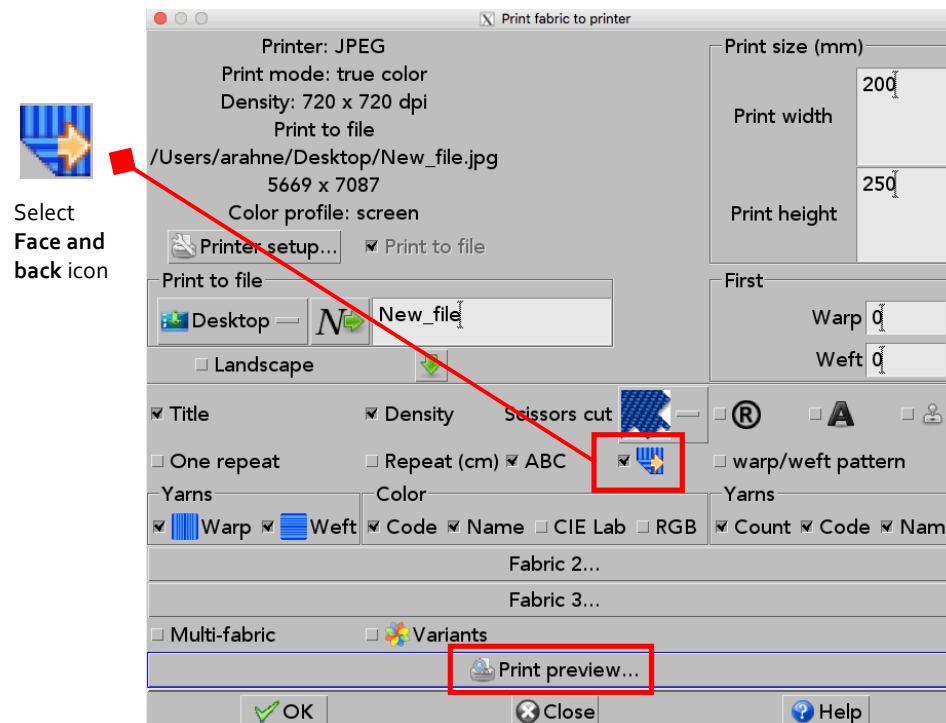
WHAT DOES IT DO?

It enables you to print the face and back of the fabric in the same printout.

WHERE?

Go to **File > Print fabric to printer**. In the Print fabric to printer dialog, check the box next to the Face/back icon.

HOWTO USE IT? Select the **Face and back** icon and click on **Print preview**. If you like the result in the Print preview window, close it, and click the OK button to print the fabric simulation.



FACE

BACK

Blossom

Warp: 114/1 cm
Weft: 114/1 cm
Weave: 240x2952

ArahneWeave www.arahne.si
8.3c MASA
Dusans-iMac local arahne 05.03.2018



Warp
40/1 Td
SILK B2001-9 *

Weft
90/1 Td
SILK 38142-1

90/1 Td
SILK 38001-9

90/1 Td
SILK 38344-3

Fabric design by Randa

3. STITCHING POINTS

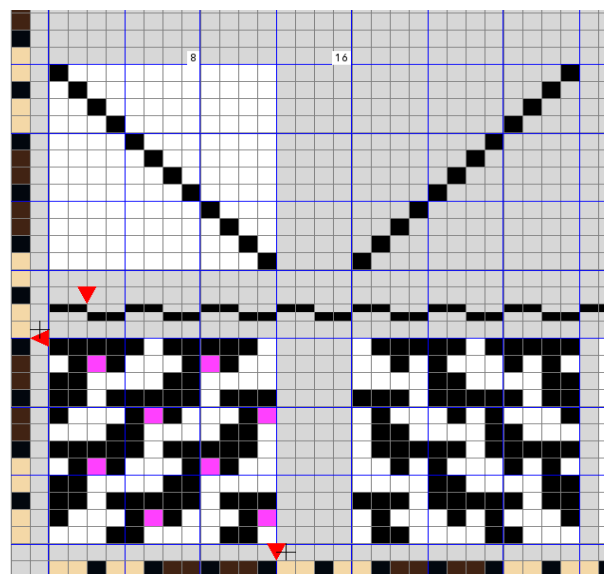
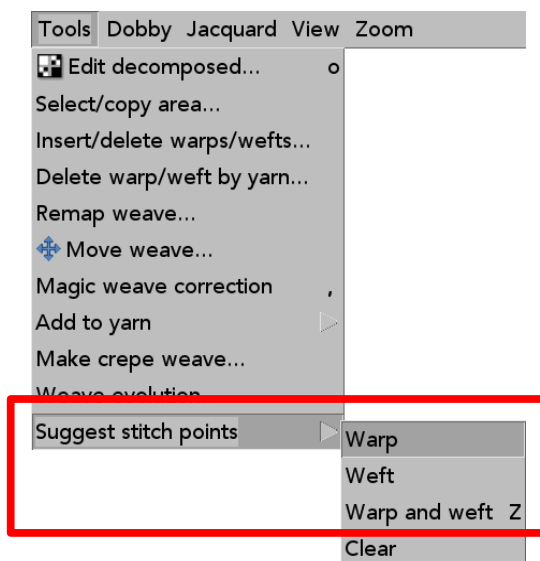
WHAT DOES IT DO?

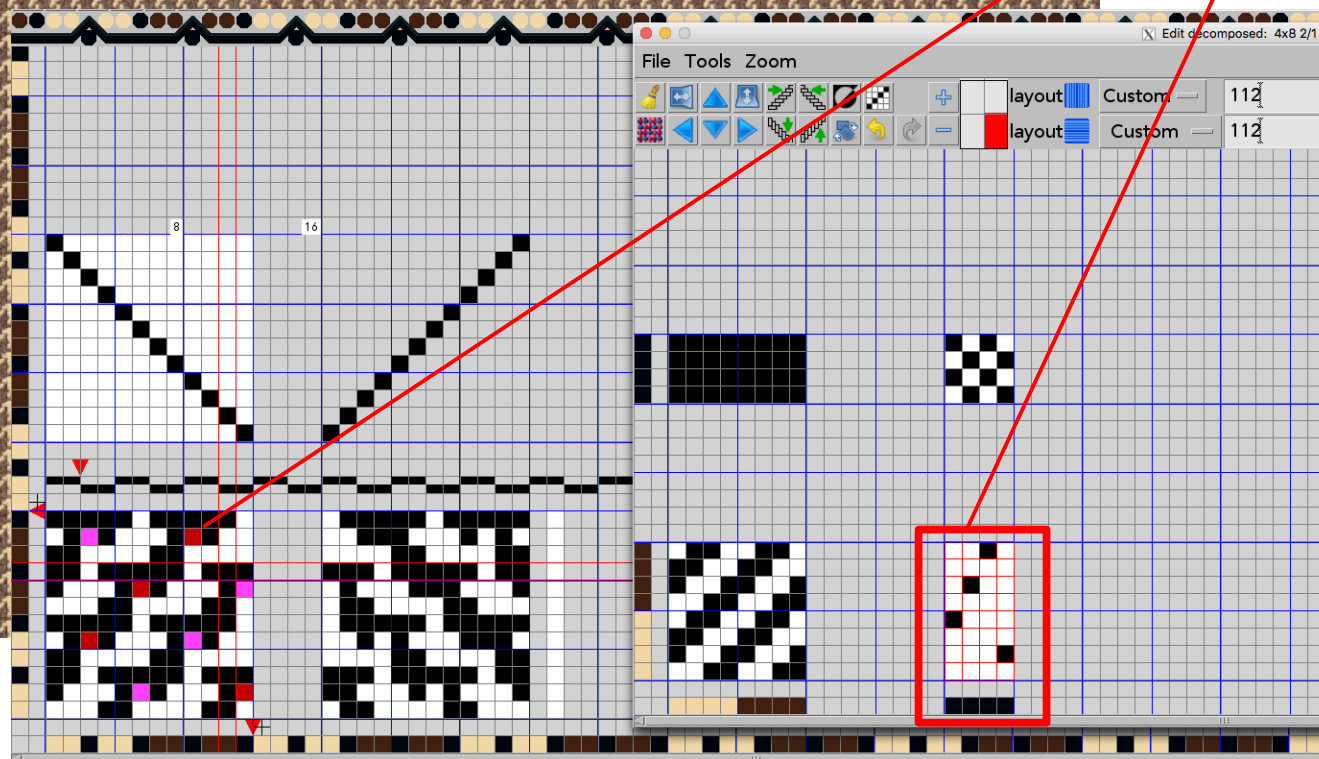
Suggests suitable stitch points for double weave fabrics to tie face and back fabric, so that stitch points are not visible on the surface, but are hidden in the middle.

WHERE? When in **Weave Editor**, go to **Tools > Suggest stitch points**.

HOW TO USE IT?

In Weave Editor go to **Tools > Suggest stitch points** and select whether you want the stitching points on **Warp**, **Weft** or **Warp and Weft**. Suggested stitching points appear on the weave in pink color (weft) or in red color (warp). To apply the point in the weave, left-click the pink point, or right-click the red point.





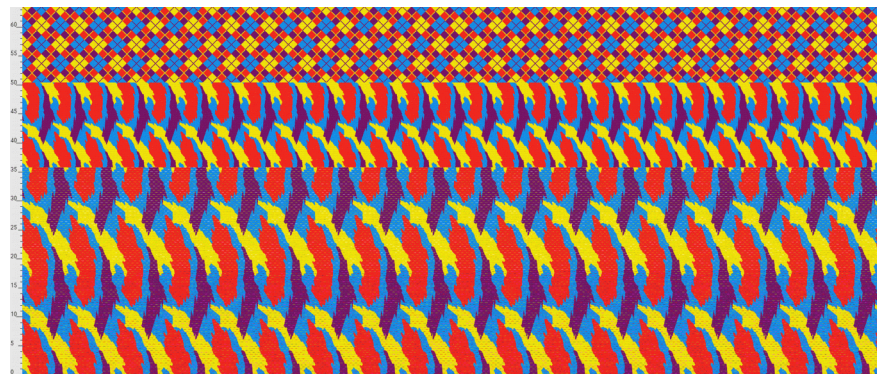
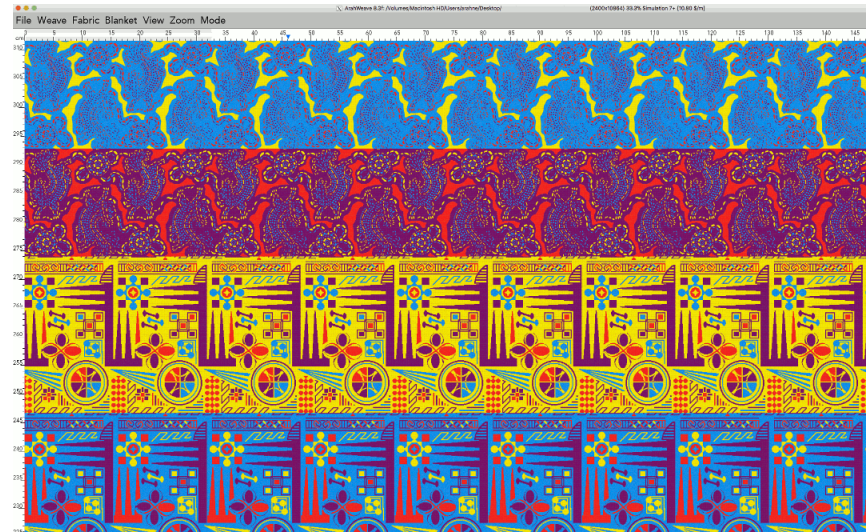
Selected stitching points will become red and will appear in "Edit decomposed" window.

4. ARAHWEAVE JACQUARDPRO XL

WHAT DOES IT DO?

ArahWeave JacquardPro XL can handle up to 262144 picks in one design repeat. With that you can weave even longer fabrics or weft blankets. JacquardPro XL is a payable extension to the standard JacquardPro edition.

262144 picks

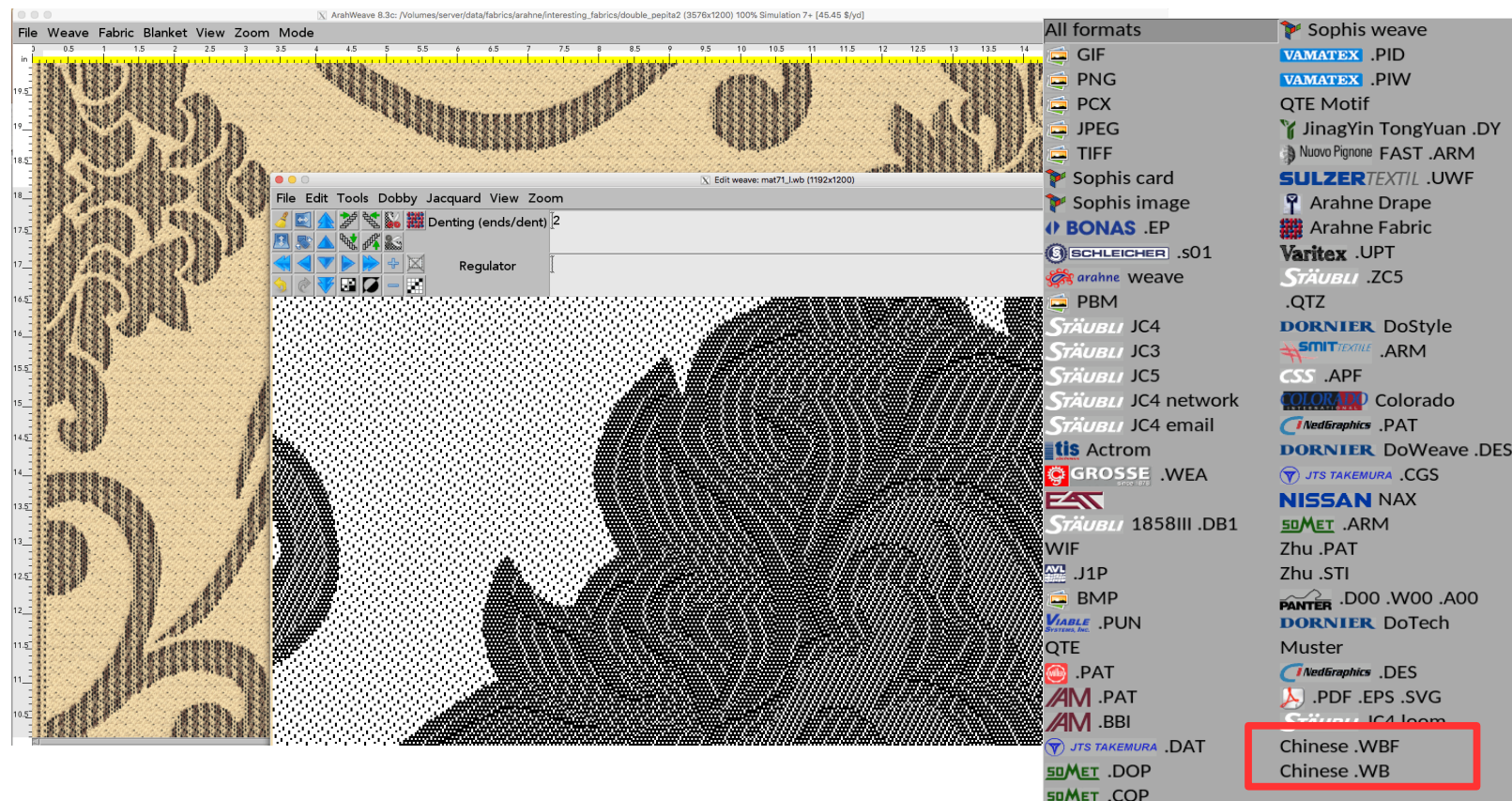


5. SUPPORT FOR READING OF CHINESE JACQUARD FORMATS .WBF AND .WB

WHAT DOES IT DO?

Among 62 image and weaving formats, ArahWeave and ArahPaint can now read two Chinese jacquard card formats: .wb and .wbf.

WHERE? Go to **Weave > Load cards** and under **All formats** select the corresponding card format.



6. QUICKLY CHECK THE WEAVE

WHAT DOES IT DO?

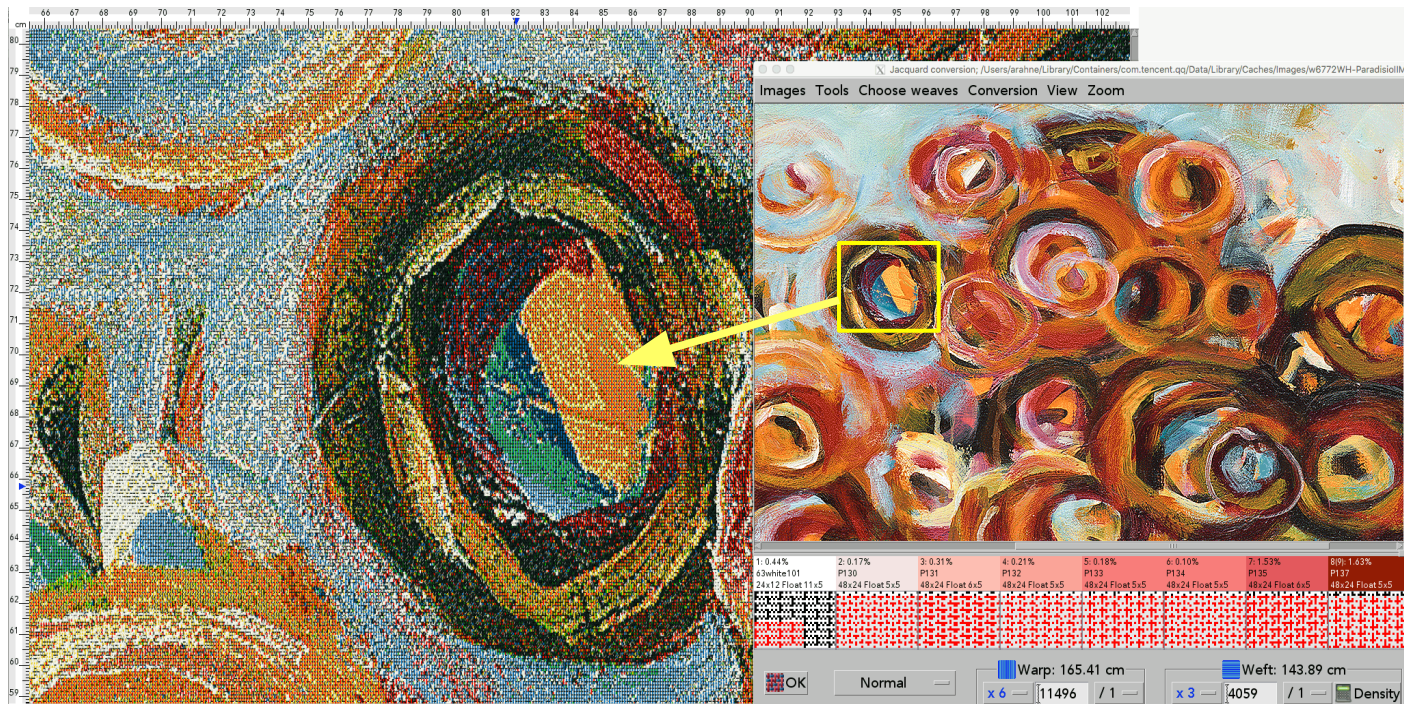
In jacquard conversion you can now quickly check the simulation. Right-click on the area in the image and program will scroll the simulation to that area.

WHERE?

In Jacquard conversion.

HOW TO USE IT?

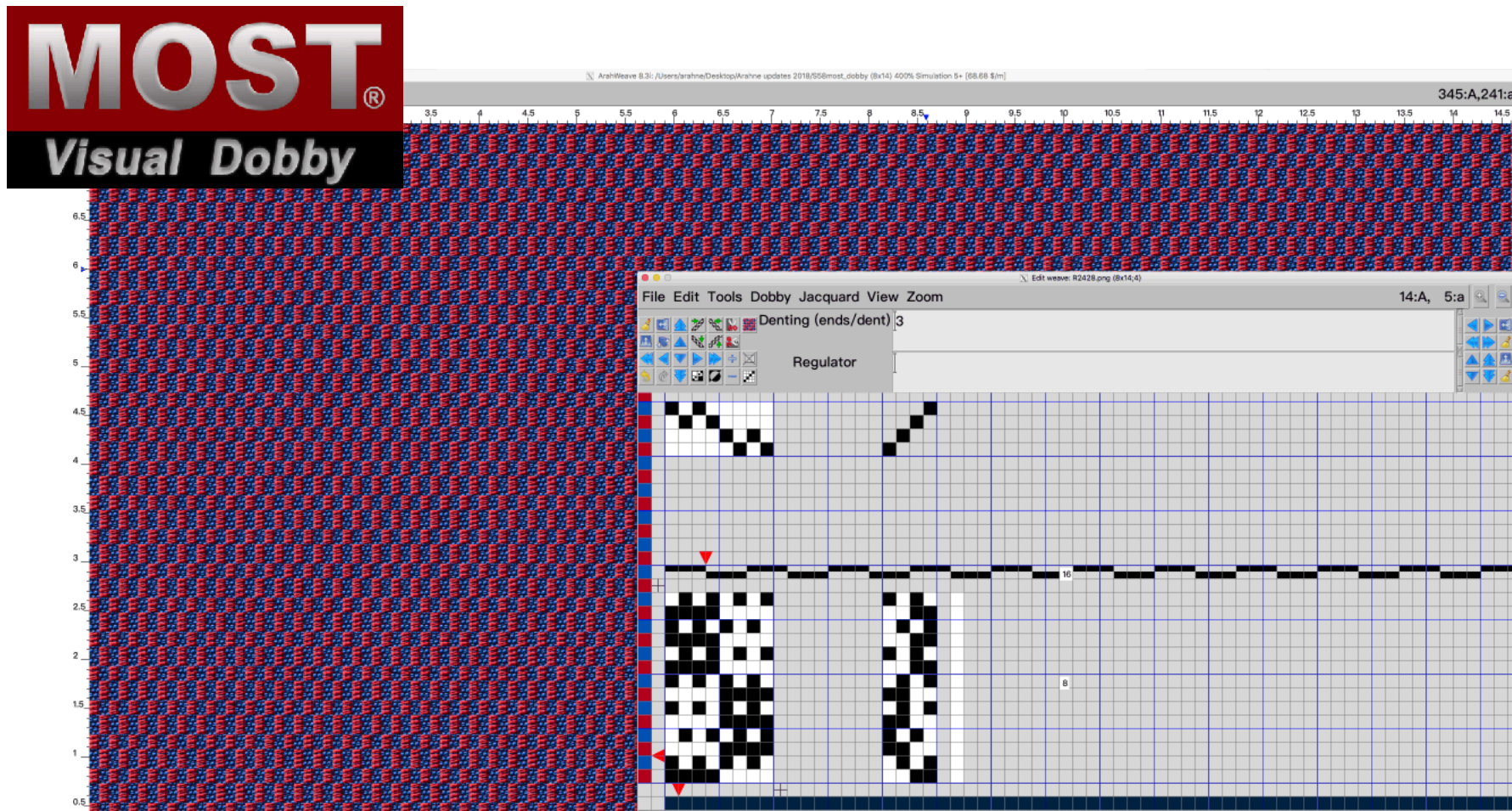
In Jacquard conversion window right-click on the specific area in the image and the software will scroll the simulation to that area.



7. SUPPORT FOR READING MOST DOBBY FABRIC FILES

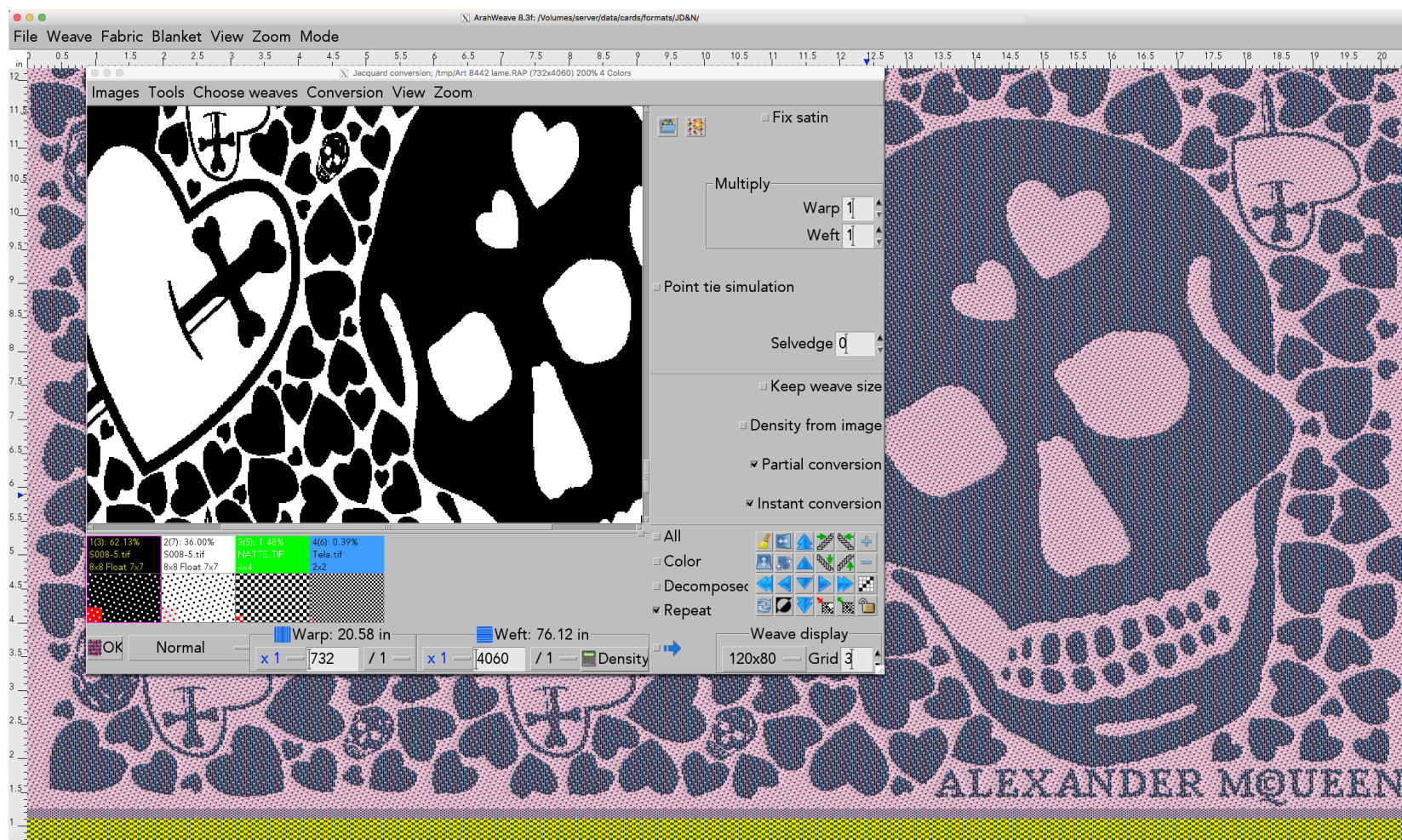
WHAT DOES IT DO?

ArahWeave loads turkish Most Dobby software .dby fabric files with weave, drafting, dobby card and weft/warp thread pattern.



8. SUPPORT FOR READING JD&N SOFTWARE FABRIC FILES

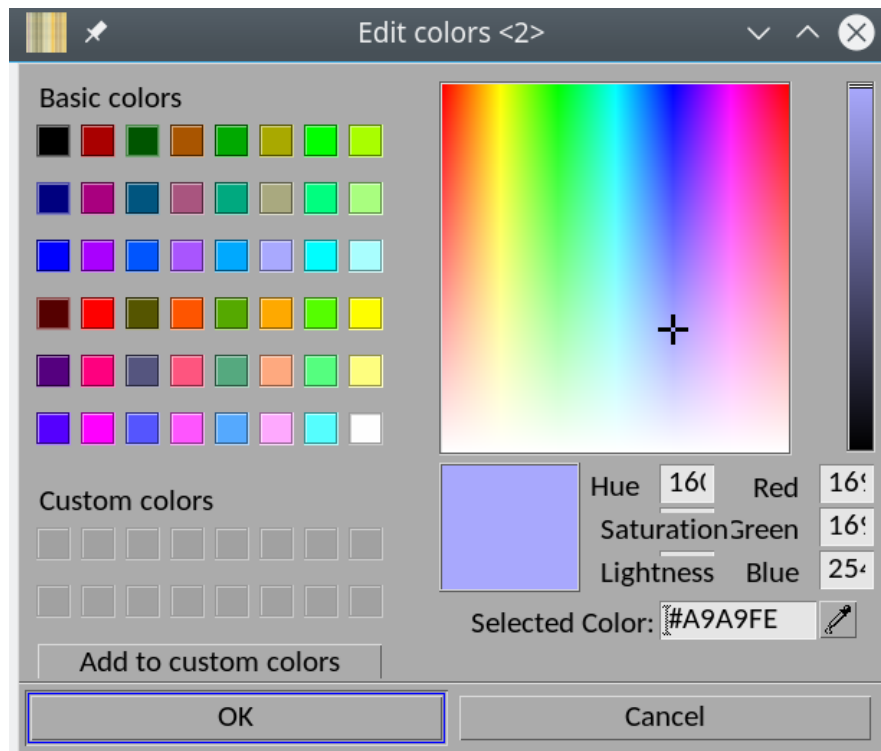
Support for reading .DIS fabric file from jacquard software JD&N from Torino. ArahWeave reads all the fabric data: weave, jacquard color image, warp and weft pattern, yarn colors, yarn names and codes, weaves in jacquard conversion, even in case when they were moved or inverted. We can even read composite weaves.



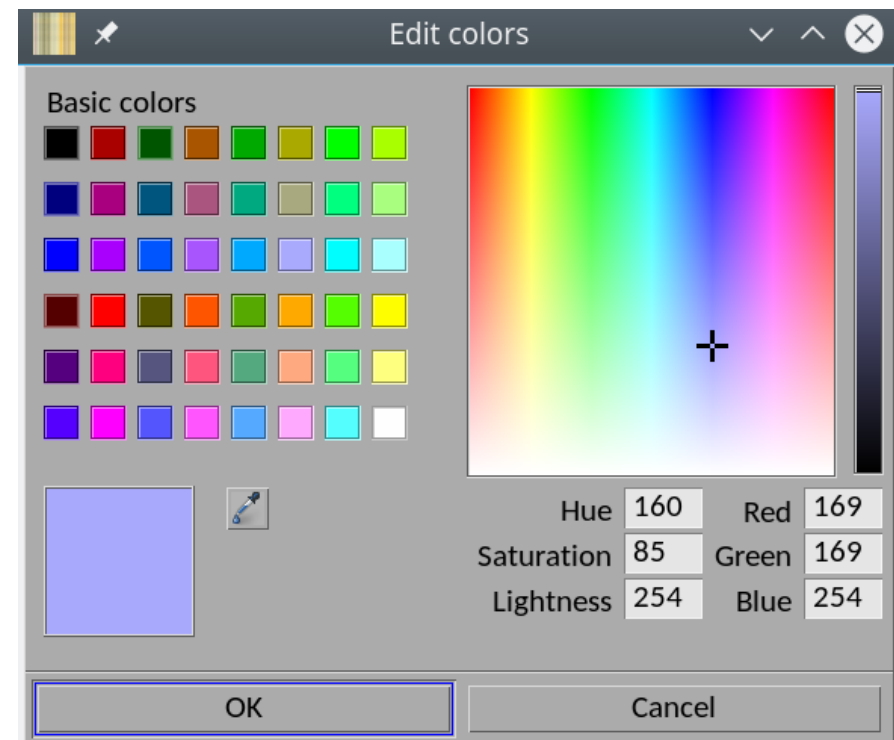
9. COLOR PICKER FACE-LIFT

New version of color picker fixed problems with adapting properly to different font sizes and fixed overlapping of text fields, when changing the language. We dropped some of the elements, which are pointless to our users, such as hexadecimal color display or the possibility to save custom colors (as this option only duplicated the functions in color atlas). The slider on the right for lightness is now interactive.

OLD color picker



NEW color picker

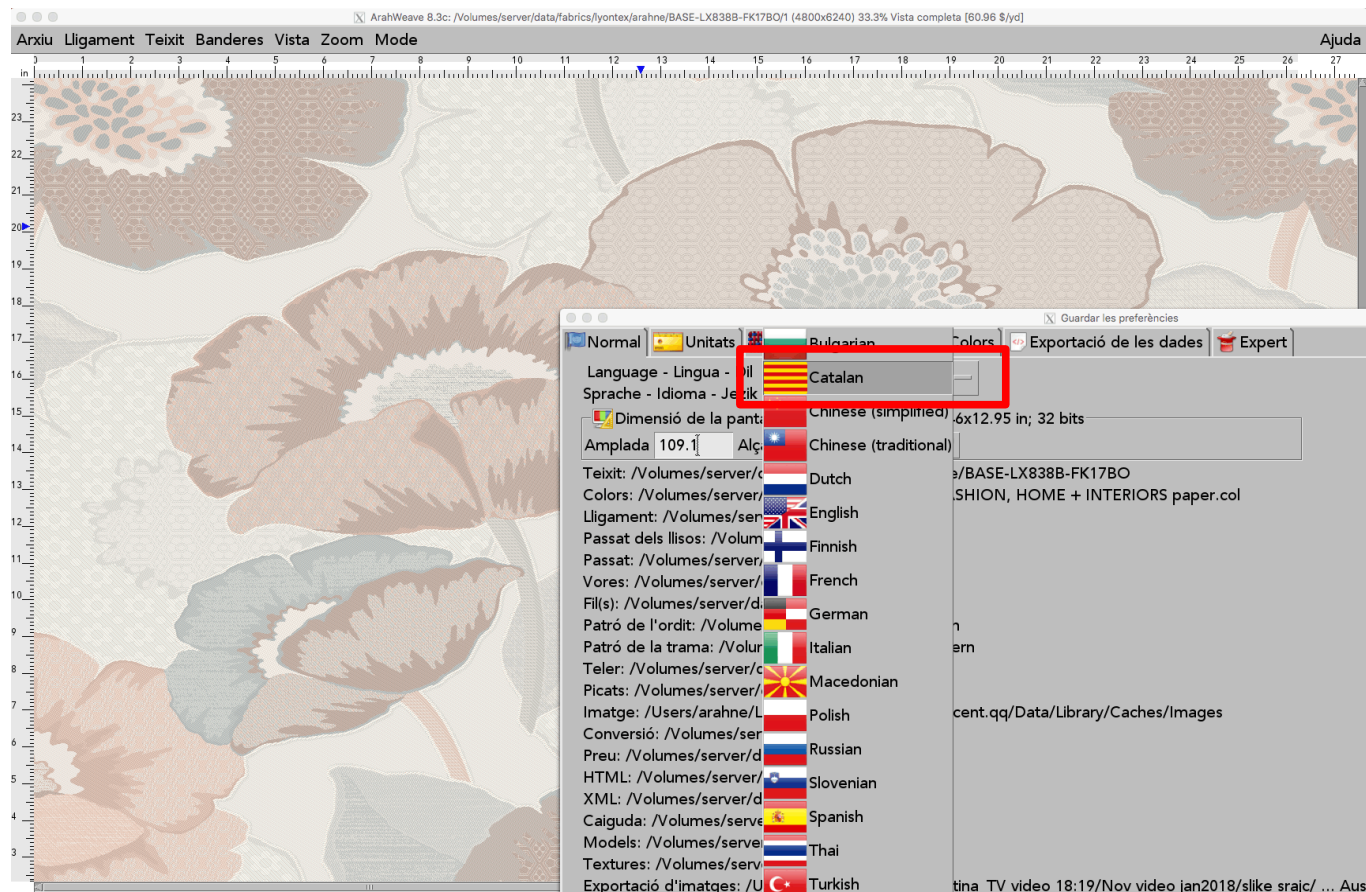


10. ARAHNE SPEAKS CATALAN

ArahWeave now supports Catalan language.

WHERE?

Go to **Help > Save setup**. Under **Normal** tab, **Language**, change the language to Catalan.



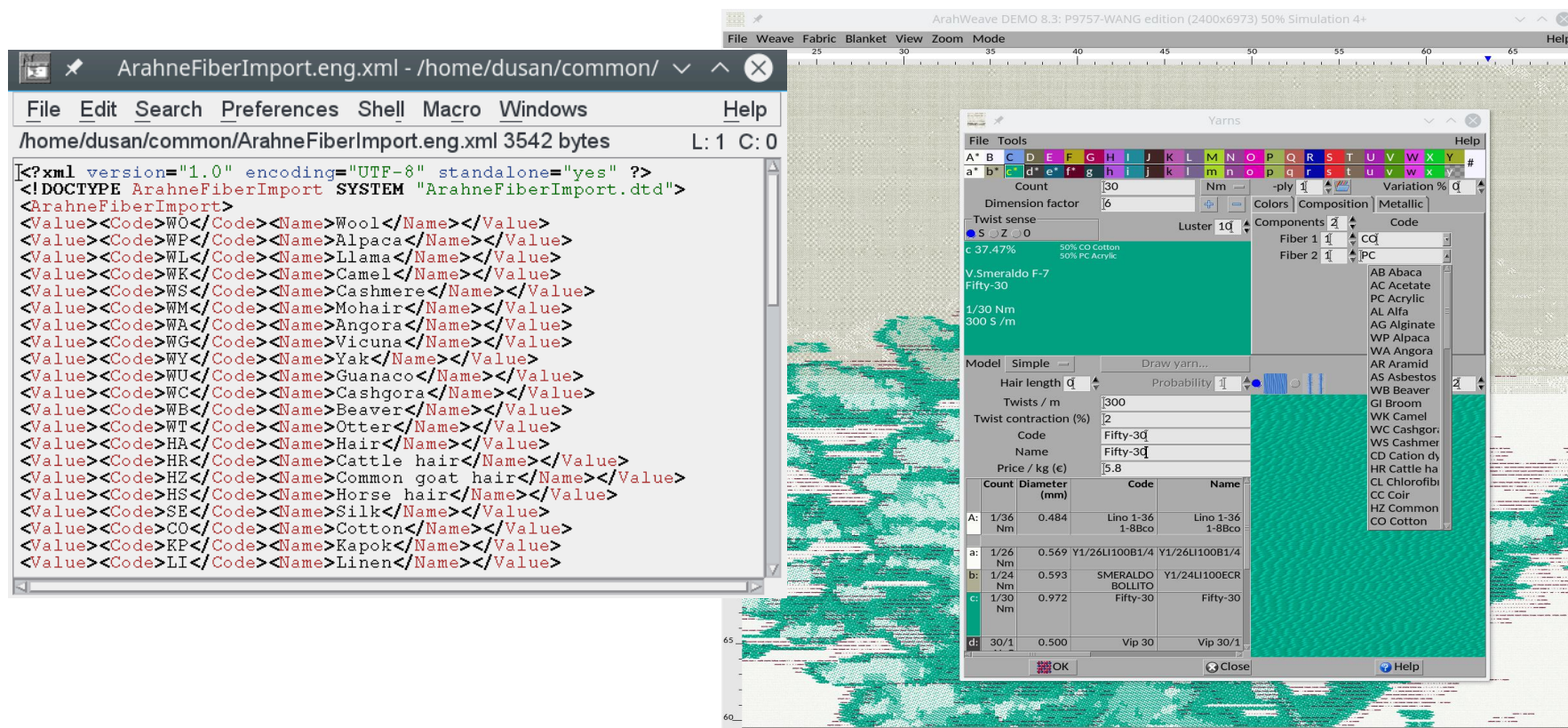
11. ADD YOUR OWN FIBER CODES

WHAT DOES IT DO?

Add your own, three or more lettered fiber codes in ArahWeave.

WHERE? Place **ArahneFiberImport.xml** file with your own fiber codes in **data/xml** directory.

HOWTO USE IT? Go to **Fabric > Yarns**, in **Yarns** window select **Composition** tab, click on **Code** and yarn codes are displayed.



12. UPDATED ARAHWEAVE MANUAL

We have improved many sections of the user's manual and added two new ones:

- Chapter 5: Variants
- Chapter 9, Section 9.2.2.: Fabric specific settings

The updated version is also online. You can check it out here:

<http://www.arahne.eu/pdf/aweave-EN.pdf>



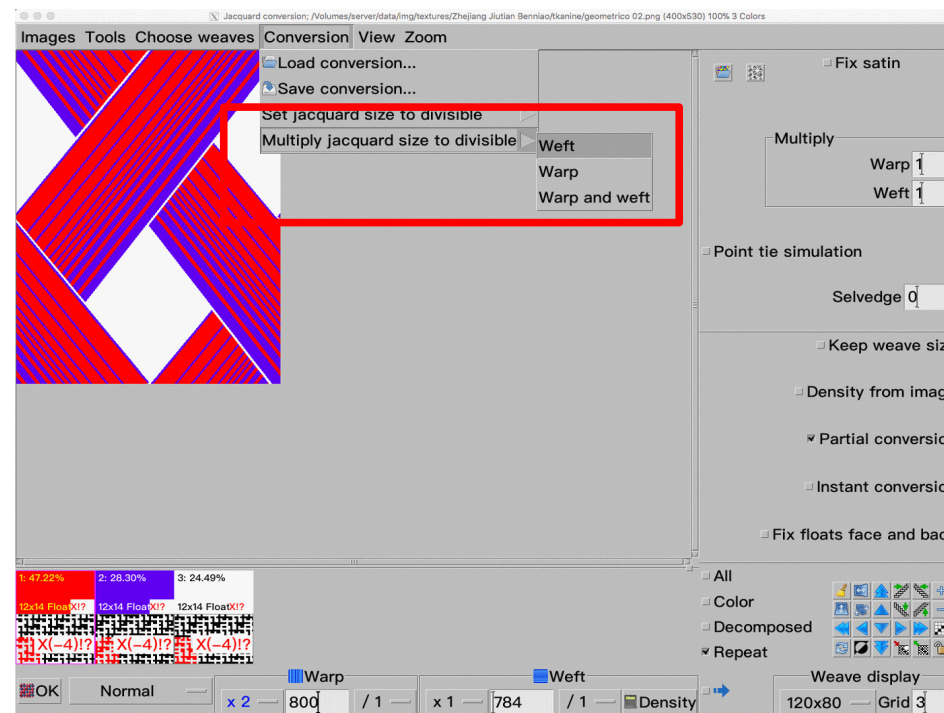
13. MULTIPLAY JACQUARD SIZE TO DIVISIBLE

WHAT DOES IT DO?

Multiplies the fabric simulation up to 16 times. After insertion of weaves, the function divides the simulation in order to make it the same final size.

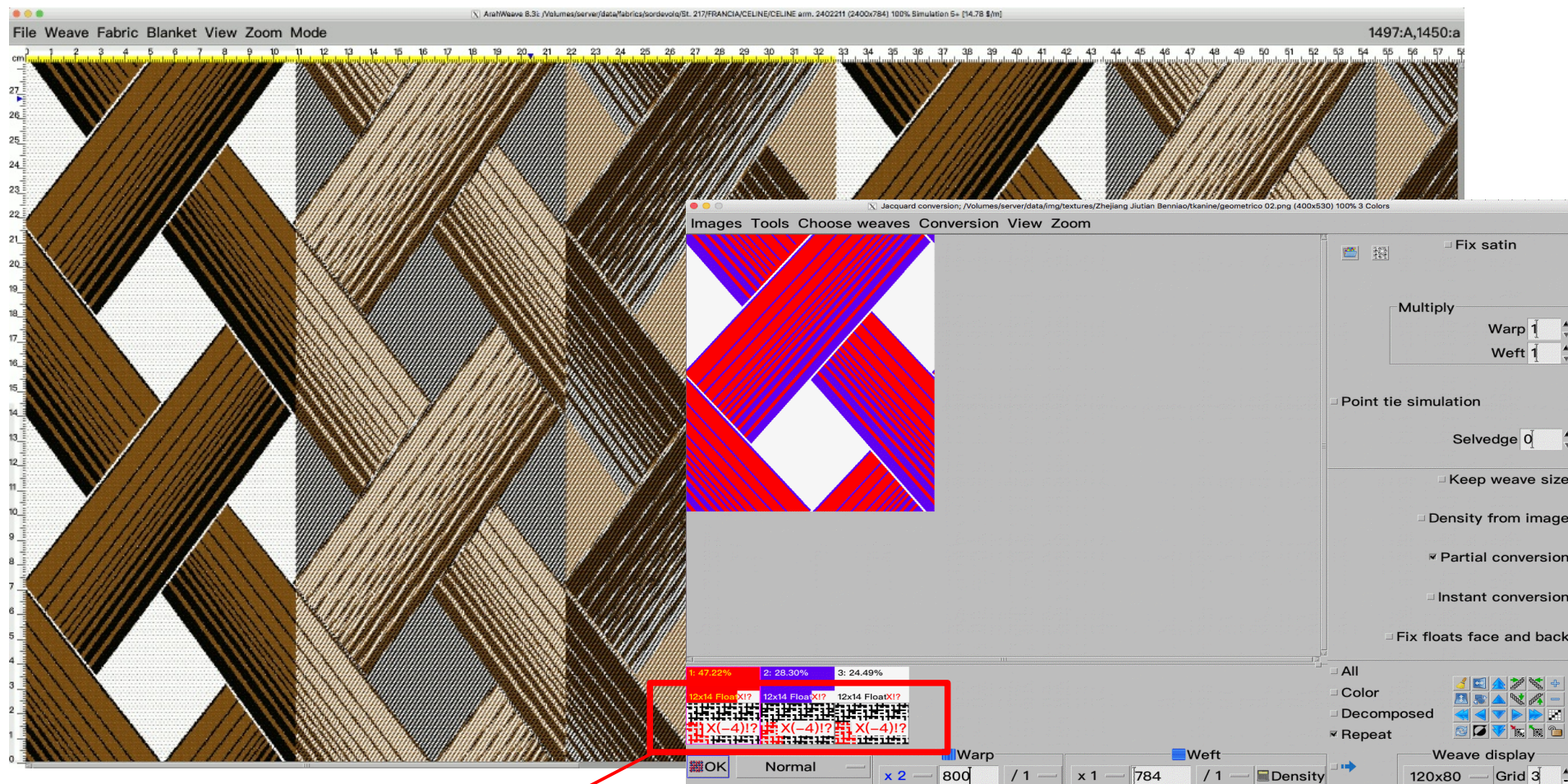
WHERE?

In Jacquard conversion go to **Conversion > Multiply jacquard size to divisible** and choose among **Warp**, **Weft** or **Warp and Weft**.



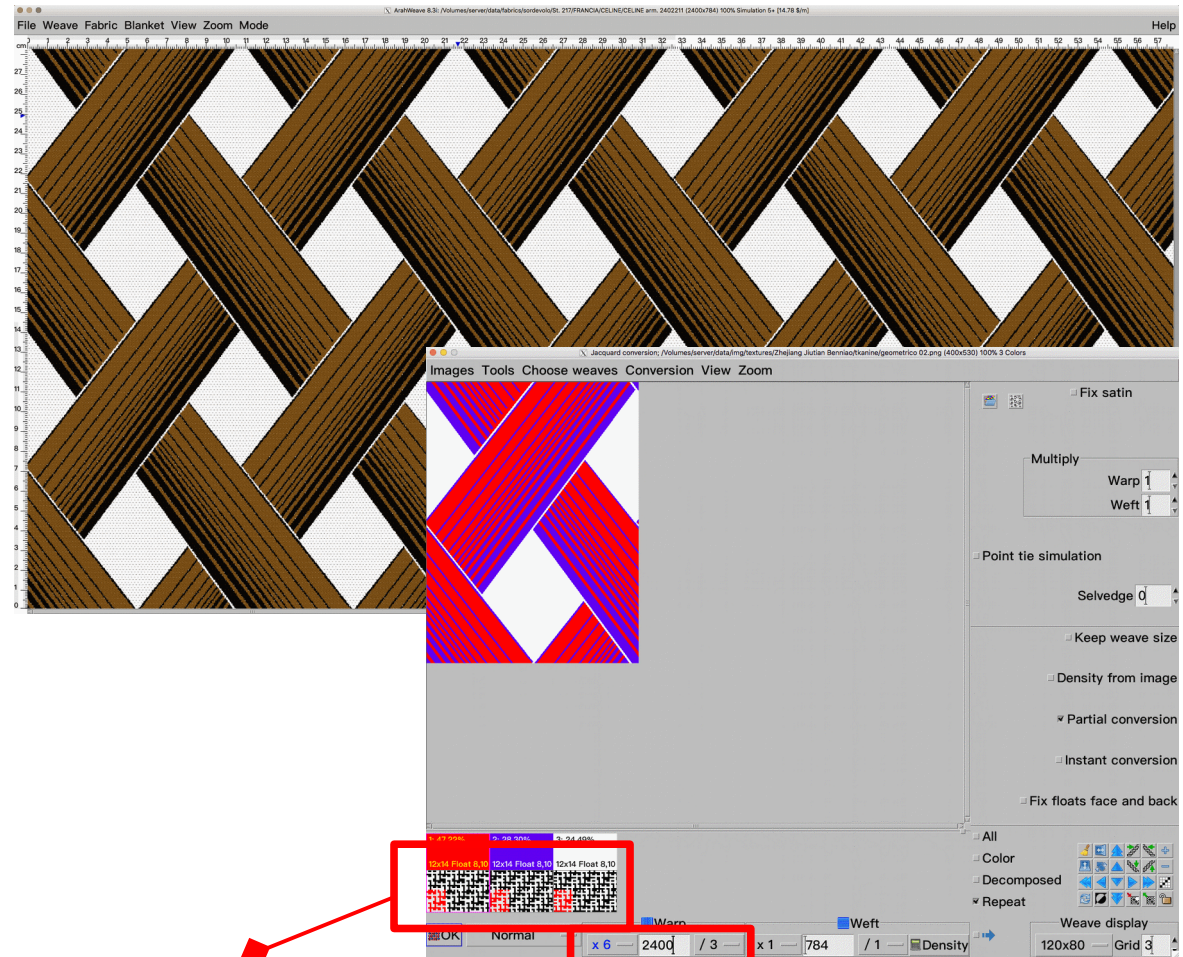
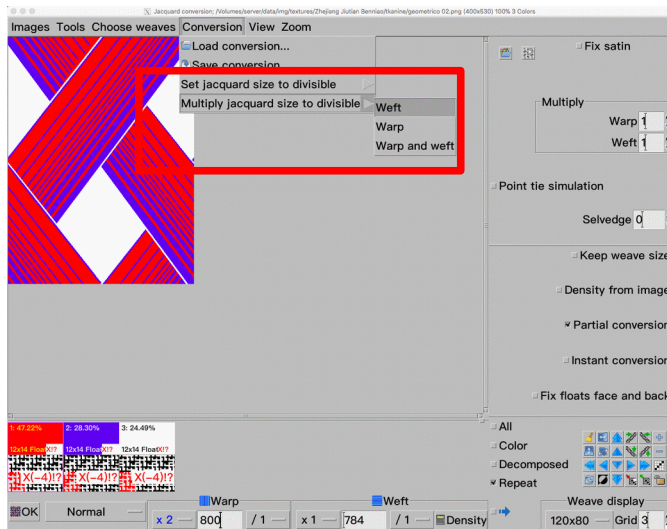
HOWTO USE IT?

If the weave is not divisible, you can correct that by multiplying the jacquard size.



the weaves are not
divisible

Go to **Conversion > Multiply jacquard size to divisible** and select **Weft**, **Warp** or **Warp and Weft** and the software will automatically multiply the jacquard size, so that the weave will become divisible.



the weaves are now divisible

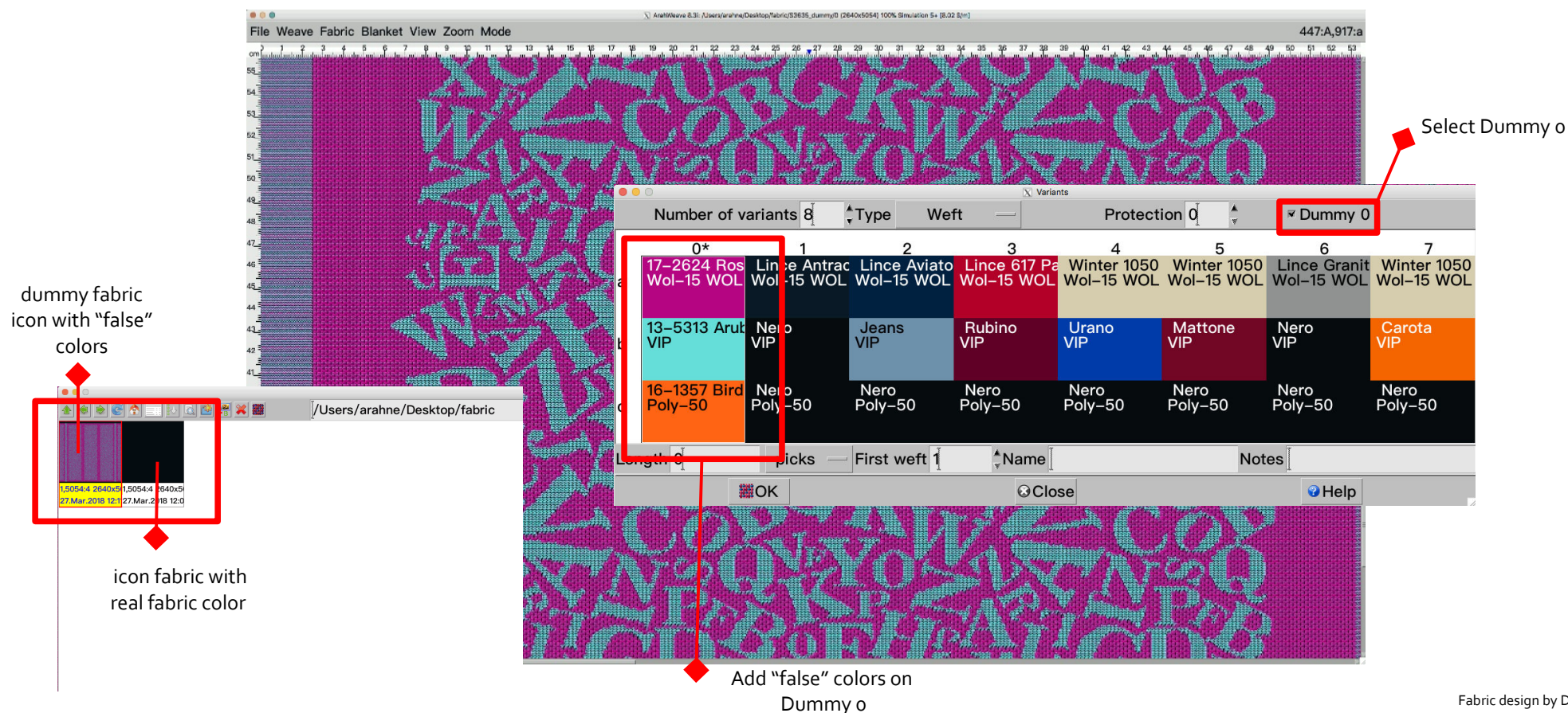
warp weave size is multiplied by 6 and divided by 3

14. DUMMY ZERO VARIANT

WHAT DOES IT DO?

It adds variant 0 as dummy, which means that this variant is not included in the variants in HTML printout or in fabric simulation printout of variants. The intention of dummy variant 0 is to use “false” colors on the design, so the icon will be clearly visible in browsing. The dummy 0 is also beneficial in the design phase, to use contrasting colors, so all the details are clearly visible.

WHERE? Go to **Blanket > Variants** and select **Dummy 0**.



dummy fabric icon with “false” colors

Select Dummy 0

Add “false” colors on Dummy 0

icon fabric with real fabric color

Number of variants	Type	Weft	Protection	0*	1	2	3	4	5	6	7
17-2624	Ros	Lince Antrac	Lince Aviato	Lince 617 Pa	Winter 1050	Winter 1050	Lince Granit	Winter 1050			
Wol-15	WOL	Wol-15 WOL	Wol-15 WOL	Wol-15 WOL	Wol-15 WOL	Wol-15 WOL	Wol-15 WOL	Wol-15 WOL			
13-5313	Arut	Nero VIP	Jeans VIP	Rubino VIP	Urano VIP	Mattone VIP	Nero VIP	Carota VIP			
16-1357	Bird	Nero Poly-50	Nero Poly-50	Nero Poly-50	Nero Poly-50	Nero Poly-50	Nero Poly-50	Nero Poly-50			

15. PERSONALIZE SCREEN AND PRINT FONT

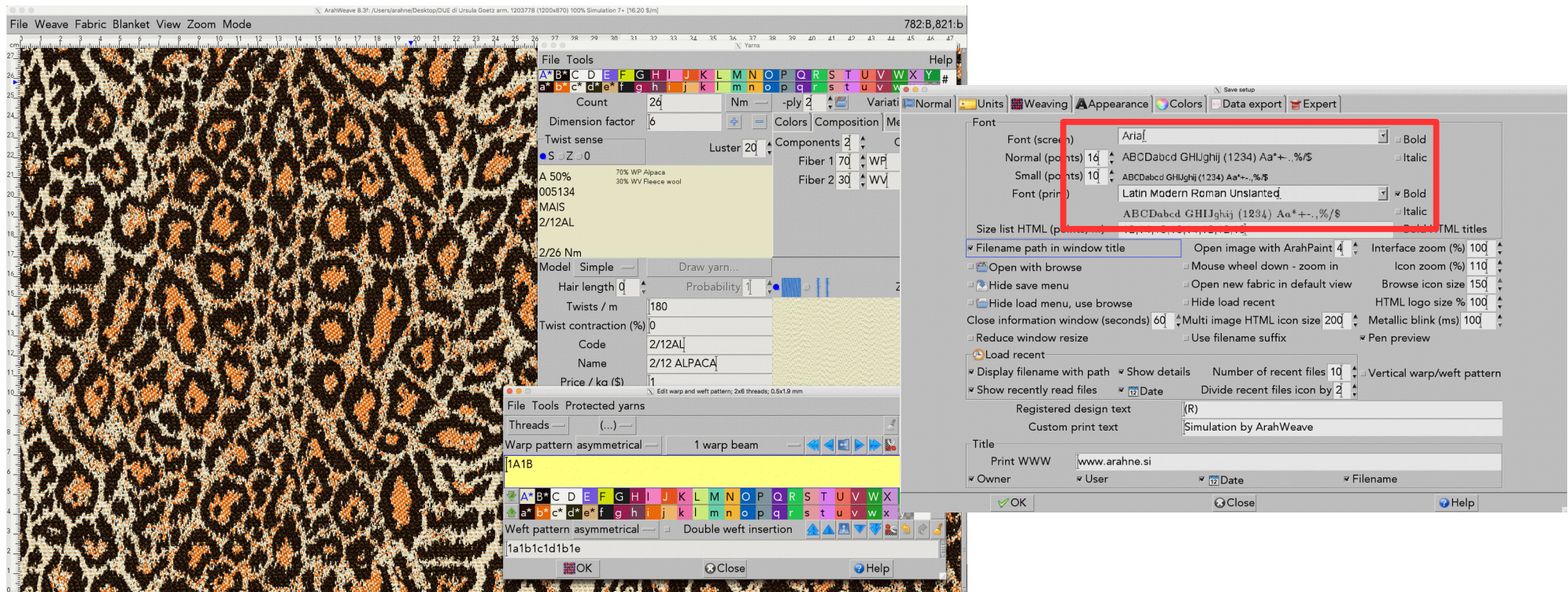
WHAT DOES IT DO?

Configure separate font for screen and for print in normal, bold and italic.

WHERE?

Select **Help > Save setup > Appearance** and choose font for screen and print.


SCREEN FONT



PRINT FONT

Leopard

Warp: 39.5/1 cm
Weft: 31.8/1 cm
Wenec: 1200x870

arahne.si
©2018 Arahne
29.03.2018 



Warp pattern[2]: 1A1B

2/26 Nm 180 S

MAIS

2/6 Nm 180 S

NEGRO

Weft pattern[6]: 1a1b1c1d1b1e

2/6 Nm 180 Z

NERO

2/6 Nm 180 Z

DAINONE

2/6 Nm 180 Z

GREGGIO

2/6 Nm 180 Z

NERO

2/6 Nm 180 Z

GREGGIO

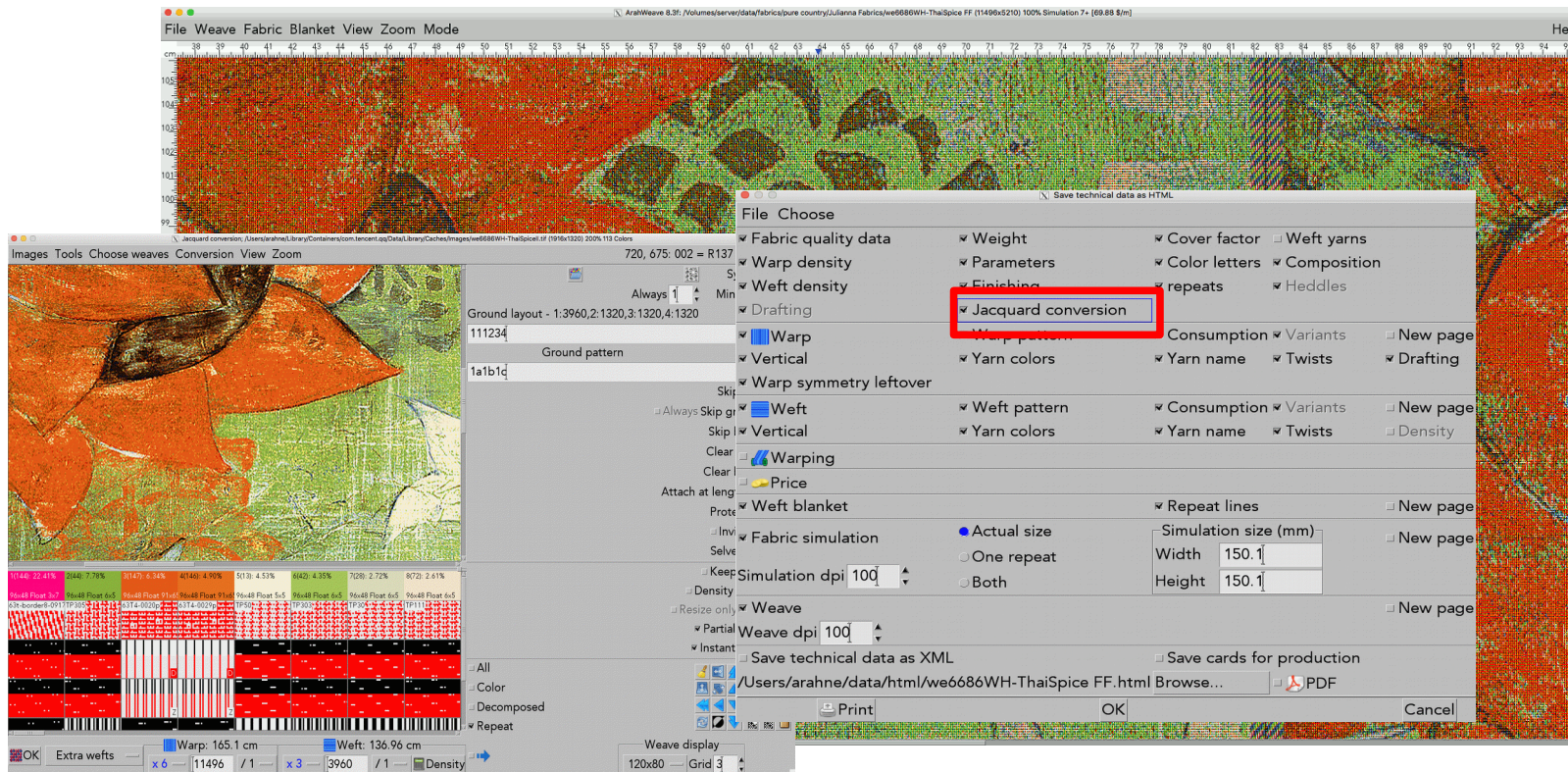


16. WEAVE CONVERSION INFORMATION IN HTML DATA SHEET

WHAT DOES IT DO?

In HTML technical data sheet added option to write weave conversion. It displays the following info: color number, RGB color value, weave name, weave repeat size and weave floats. For extra weft conversion, we added extra line for each weave and also report weft color and yarn letter, if it was chosen by the user.

WHERE? Go to File > Save technical data as HTML and select **Jacquard conversion**.





Warp length	99.99 m
Raw length	97.49 m
Fabric length	95.11 m
Raw width	165.1 cm
Finished width	165.1 cm
Warp threads	11496
Density Warp	69.63 / 1 cm
Density Weft (Loom)	28.21 / 1 cm
Density Weft (Raw)	37.11 / 1 cm
Density Weft (Finished)	38.04 / 1 cm
Weft Total	5210
Ground	3960
Regulator	1250
Take-up	2.5%
Waste warp	8%
Waste weft	8%
Weaving shrinkage	0%
Finishing shrinkage	2.5%
Finishing weight change	0%
Consumption	68.44 kg
Raw weight	645.9 g/m ² 391.2 g/m ²
Finished weight	662.0 g/m ² 401.0 g/m ²

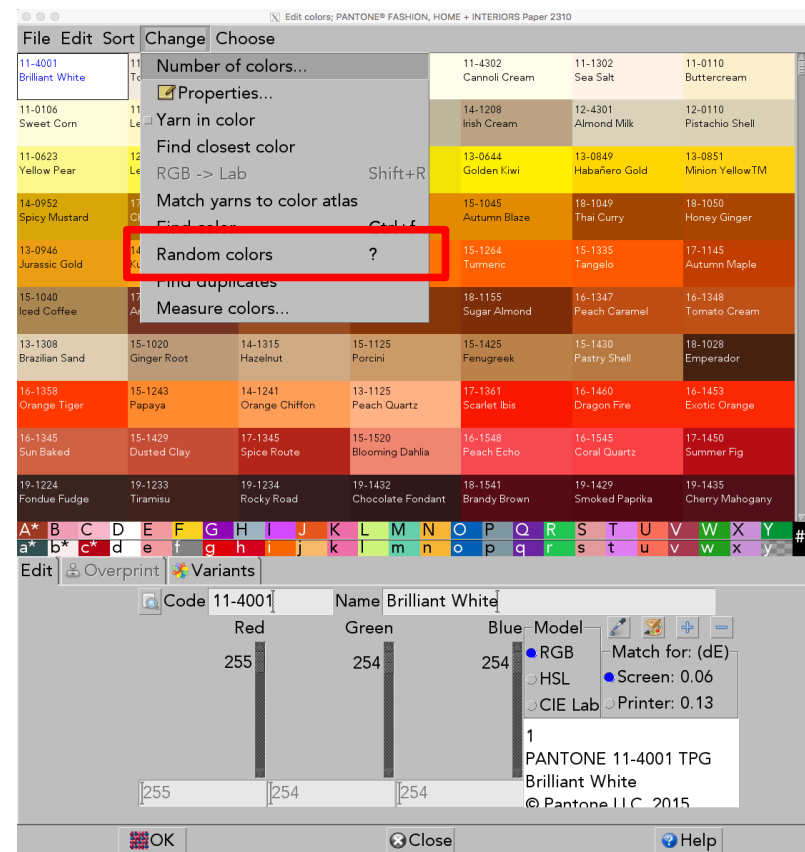
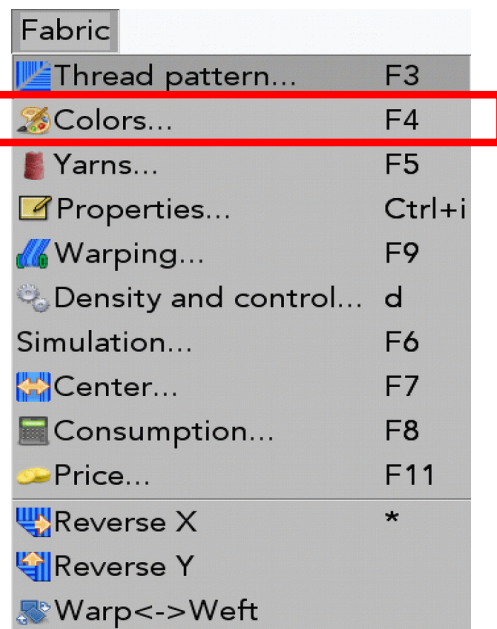
Color	RGB	Weave	Size	Long floats	14(150)	207,215,90	63T4-0075p	96x48	---,---	28(61)	135,196,157	TP206	96x48	5,5
1(144)	255,0,127	63t-border8-091708	96x48	7,7		D		96x16	2,III				96x16	90,III
			96x16	92,III		Z		96x16	2,III				96x16	90,III
			96x16	92,III				96x16	92,III		Z		96x16	3,III
			96x16	92,III	15(148)	220,66,20	63T4-0110	96x48	47,47	29(22)	226,225,162	TP21	96x48	5,5
2(147)	224,88,26	63T4-0020p	96x48	---,---		D		96x16	5,III				96x16	92,III
	D		96x16	5,III				96x16	91,III				96x16	92,III
	Z		96x16	3,III				96x16	91,III		Z		96x16	2,III
			96x16	91,III	16(60)	157,203,171	TP205	96x48	5,5	30(19)	128,93,20	TP56p	96x48	5,5
			96x16	91,III				96x16	93,III				96x16	91,III
3(146)	228,112,33	63T4-0029p	96x48	---,---				96x16	93,III				96x16	91,III
	D		96x16	5,III		Z		96x16	3,III		Z		96x16	1,III
	Z		96x16	3,III	17(79)	166,80,3	TP118	96x48	5,5	31(45)	102,130,27	TP306	96x48	5,5
			96x16	91,III				96x16	91,III				96x16	92,III
4(13)	250,246,215	TP50	96x48	5,5				96x16	91,III				96x16	92,III
			96x16	92,III		Z		96x16	2,III		Z		96x16	2,III
			96x16	92,III	18(14)	251,245,199	TP51	96x48	5,5	32(73)	250,214,156	TP112p	96x48	5,5
	Z		96x16	4,III				96x16	93,III				96x16	92,III
5(42)	167,196,90	TP303	96x48	5,5				96x16	93,III				96x16	92,III
			96x16	92,III		Z		96x16	3,III		Z		96x16	2,III
			96x16	92,III	19(99)	140,83,33	TP414	96x48	5,5	33(30)	84,84,52	TP32	96x48	5,5
	Z		96x16	2,III				96x16	91,III				96x16	92,III
6(72)	244,224,203	TP111	96x48	5,5				96x16	91,III				96x16	92,III
			96x16	92,III		Z		96x16	1,III		Z		96x16	2,III
			96x16	92,III	20(15)	252,238,155	TP52	96x48	5,5	34(80)	156,53,3	TP119	96x48	5,5
	Z		96x16	2,III				96x16	92,III				96x16	91,III
7(28)	218,216,187	TP30	96x48	5,5				96x16	92,III				96x16	91,III
			96x16	93,III		Z		96x16	4,III		Z		96x16	1,III
			96x16	93,III	21(108)	153,108,72	TP523p	96x48	5,5	35(66)	192,169,219	TP161	96x48	5,5
	Z		96x16	3,III				96x16	91,III				96x16	91,III
8(24)	170,162,72	TP23	96x48	5,5				96x16	91,III				96x16	91,III
			96x16	91,III		Z		96x16	3,III		Z		96x16	2,III
			96x16	91,III	22(149)	219,27,11	63T4-0107	96x48	47,47	36(100)	112,64,35	TP415p	96x48	5,5
	Z		96x16	2,III		D		96x16	5,III				96x16	91,III
9(23)	218,215,131	TP22	96x48	5,5				96x16	90,III				96x16	91,III
			96x16	91,III	23(78)	246,117,71	TP117	96x48	5,5	37(9)	147,29,6	TP137	96x48	5,5
			96x16	91,III				96x16	92,III				96x16	91,III
	Z		96x16	2,III				96x16	92,III				96x16	91,III
10(1)	255,255,255	63t-white101.tif	96x48	5,5				96x16	2,III		Z		96x16	3,III
			96x16	92,III	24(17)	195,165,71	TP54	96x48	5,5	38(102)	95,43,11	TP417	96x48	5,5
			96x16	92,III				96x16	93,III				96x16	91,III
	Z		96x16	4,III				96x16	93,III				96x16	91,III
11(29)	129,131,98	TP31	96x48	5,5				96x16	3,III		Z		96x16	1,III
			96x16	92,III	25(2)	246,224,224	TP130	96x48	5,5	39(46)	83,103,30	TP307	96x48	5,5
			96x16	92,III				96x16	91,III				96x16	91,III
	Z		96x16	2,III				96x16	91,III				96x16	91,III
12(16)	250,229,109	TP53	96x48	5,5		Z		96x16	2,III		Z		96x16	2,III
			96x16	92,III	26(76)	252,173,80	TP115	96x48	5,5	40(62)	107,178,130	TP207	96x48	5,5
			96x16	92,III				96x16	92,III				96x16	92,III
	Z		96x16	4,III				96x16	92,III				96x16	92,III
13(44)	137,176,61	TP305	96x48	5,5		Z		96x16	2,III		Z		96x16	2,III
			96x16	92,III	27(21)	228,223,185	TP20	96x48	5,5	41(35)	99,116,158	TP764	96x48	5,5
			96x16	92,III				96x16	93,III				96x16	92,III
	Z		96x16	2,III				96x16	93,III				96x16	92,III
			96x16	92,III		Z		96x16	3,III		Z		96x16	2,III

17. RANDOM COLORS

WHAT DOES IT DO?

Use random colors function to automatically change the colors of the yarns using the chosen color palette. It is very useful when making fabric color variants.

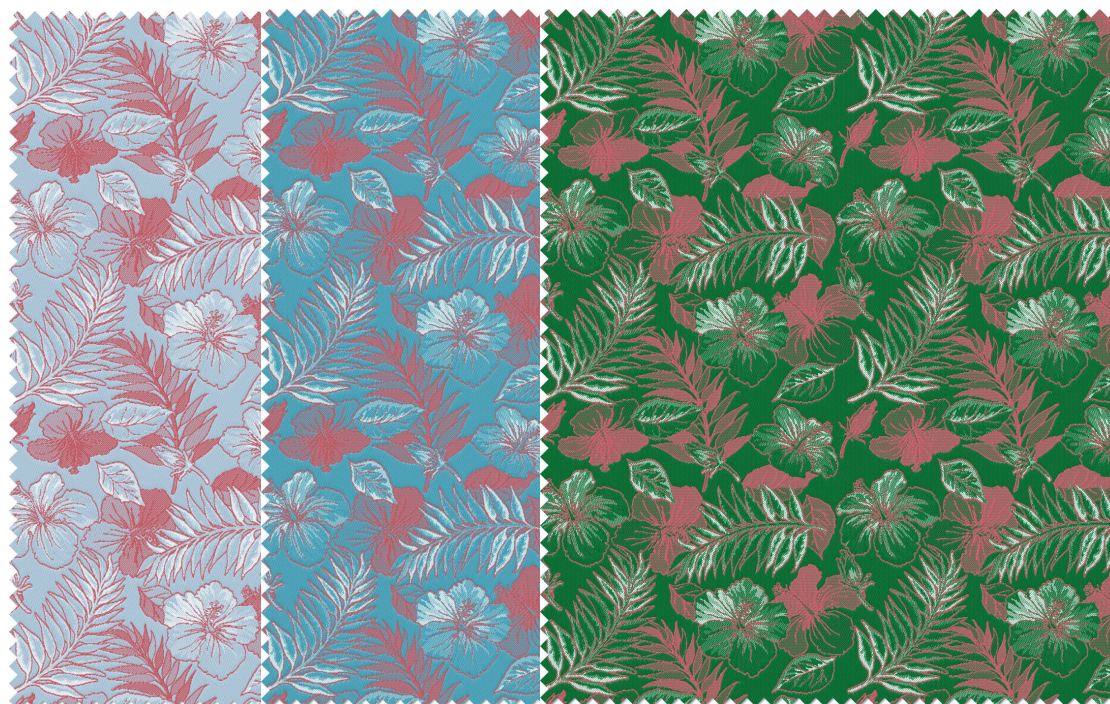
WHERE? Go to **Fabric > Colors** and open **Change** menu.



HOWTO USE IT?

Click on the **Random colors** function or use **shortcut “?”** when in Edit colors window and the yarn colors will automatically change choosing random colors from loaded color palette.

19-1325 Hot Chocolate	15-1150 Dark Cheddar	19-1250 Picante	13-0922 Straw
13-0858 Vibrant Yellow	12-0643 Blazing Yellow	14-1051 Warm Apricot	16-0840 Antique Moss
17-3014 Mulberry	17-2624 Rose Violet	15-3207 Mauve Mist	14-1909 Coral Blush
18-1664 Fiery Red	17-1664 Poppy Red	16-1544 Persimmon	15-5416 Florida Keys
19-4021 Blueberry	19-5406 Pine Grove	19-4305 Pirate Black	18-6030 Jolly Green
19-4818 Mallard Green	17-0330 Turtle Green	18-0515 Dusty Olive	14-0156 Summer Green
11-0304 Water Lily	11-0609 Ethereal Green	12-0717 Anise Flower	15-4415 Milky Blue
18-4217 Bluestone	17-4139 Azure Blue	17-4111 Citadel	13-4308 Baby Blue



Fabric design by Randa

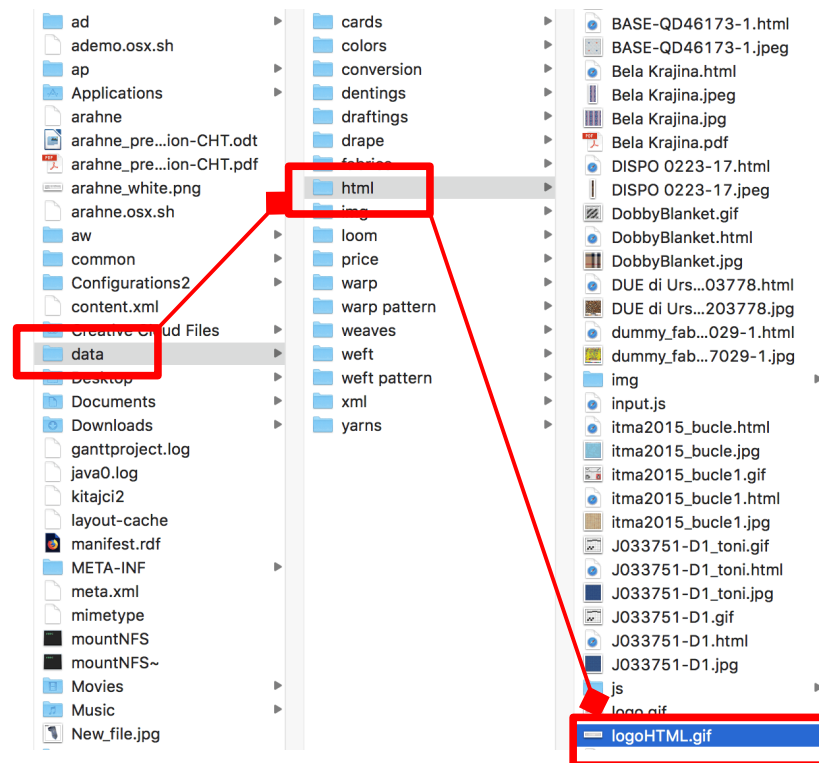
18. ADD SECOND LOGO ON THE HTML DATA SHEET

WHAT DOES IT DO?

You can add a second image on HTML data sheet. Sometimes a customer wants to have more info in the data sheet header, so we added the option of adding another logo image.


WHERE?

Place the file using filename **logoHTML.gif** into **data/html** directory.



HOWTO USE IT?

Go to **File > Save technical data as HTML** and press **Print**. Inserted logoHTML will be displayed on the top of the page.


arahne

CAD/CAM for weaving

Arahne, d.o.o., Novinarska 3, SI-1000 Ljubljana, Slovenia, EU
 Phone: +386 1 439 5280, Fax: +386 1 431 6119
 arahne@arahne.si www.arahne.si
 VAT number: SI46691685

SKB banka d.d. Ljubljana
 Ajdovščina 4, SI-1513 Ljubljana, Slovenia, EU
 SWIFT: SKBASIX
 Account No. (IBAN): SI56 0313 4100 0276 984

Spring strolling

Warp length	1 m
Raw length	1 m
Fabric length	1 m
Raw width	140 cm
Finished width	140 cm
Warp threads	10080
Density Warp	72 / 1 cm
Density Weft (Loom)	46 / 1 cm
Density Weft (Raw)	46 / 1 cm
Density Weft (Finished)	46 / 1 cm
Take-up	0%
Waste warp	0%
Waste weft	5%
Weaving shrinkage	0%
Finishing shrinkage	0%
Finishing weight change	0%
Consumption	0.18 kg
Raw weight	175.3 g/m
Finished weight	125.3 g/m
Fill coupe	125.2 g/m ²

Warp pattern 10080 x Repeat (1) + 0 Leftover
 1 1 5555 1 YON 60 1 NeC 0

Warp	Repeat	Design	Fill coupe	Total
	threads	threads	%	g
A	1	10080	0.00	99.2
Total	10080	1	10080	99.2

01

Warp	Code	Color	Count
A	LYON	5555	60 1 NeC

Name	Spring strolling			
CAD filename	/Users/arahne/Desktop/BASE-LX679C-PE15-lyontex			
CAM filename	LX679C-j5			
Reed number	Reed width	Denting	Dents	
72 / 1 cm	139.97 cm	1	10080	
Selvedge	2 x 0.01 cm	3	2 x 1	
Total	140.00 cm		10082	

Repeat	Weave	Design	Denting	Weave	Total
	LX679C-j5		Regulator	Design	
Warp	4800	1	4800	4800	
		0.01 cm	1 Dents	66.67 cm	66.67 cm
Weft	3840	3840	1	3840	3840
		83.48 cm	1 advances	83.48 cm	83.48 cm

Cover factor			
Warp	Weft	Total	Transparency
125.51%	87.82%	106.67%	0.00%

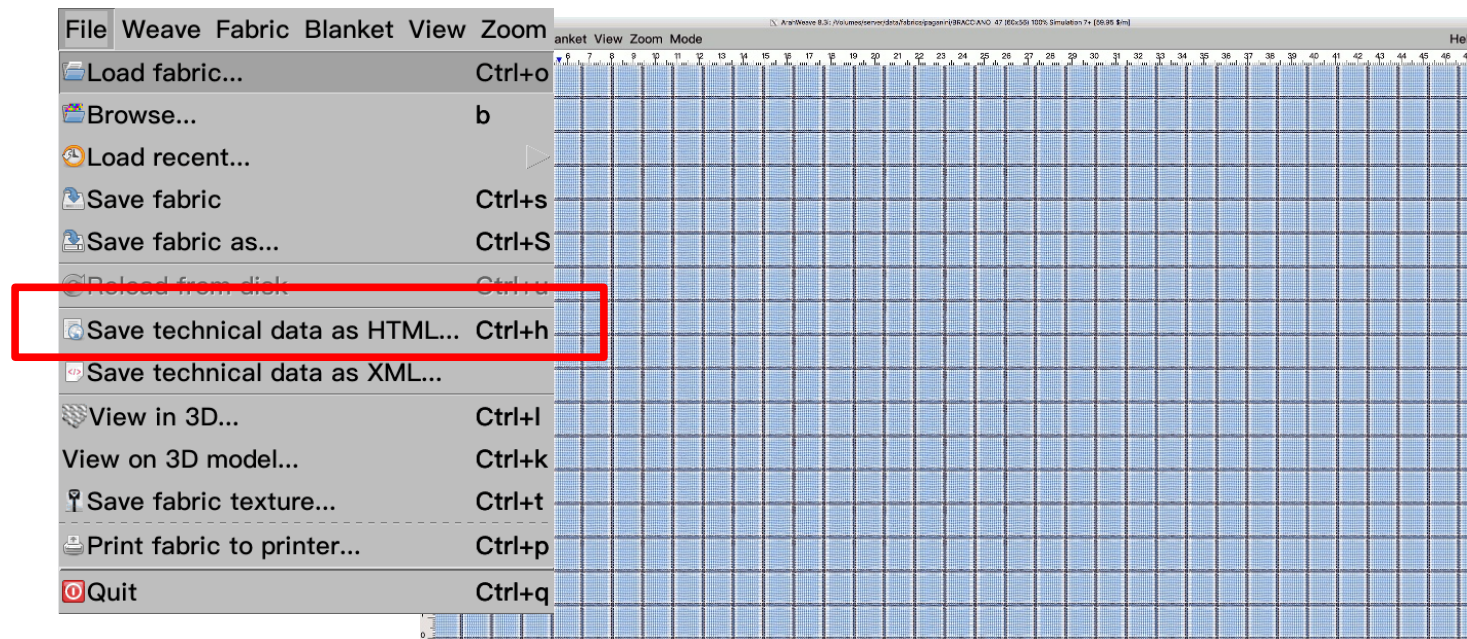
19. SETUP HTML DATA SHEET

WHAT DOES IT DO?

You can now setup different data for specific HTML data sheets, save the data layout and load it when needed. Different customers use different data sheets for different purposes: warping, commercial, production, etc. This function allows faster access to the HTML data sheet layout needed for a specific purpose.

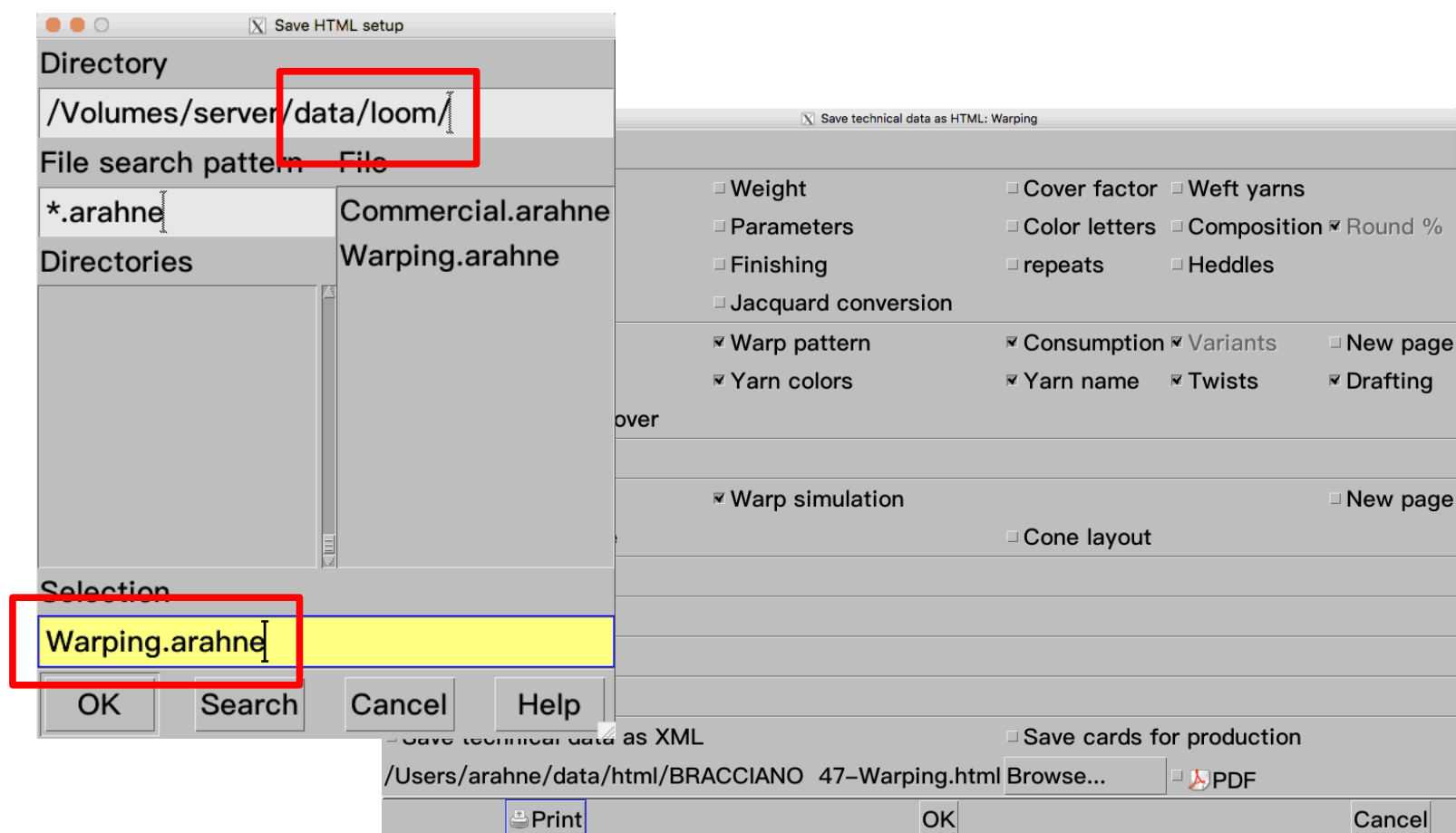
WHERE?

Go to **File > Save technical data as HTML**.

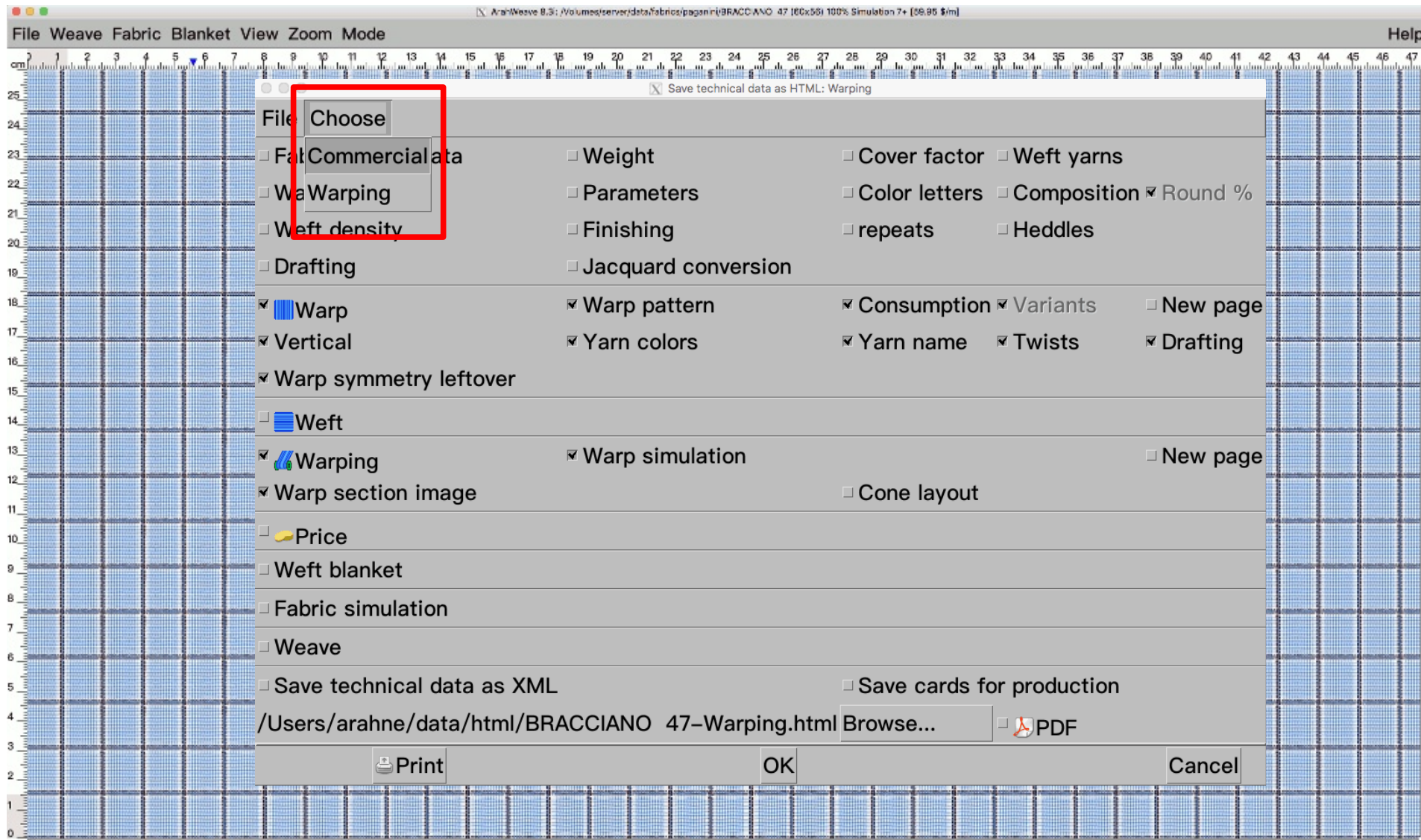


HOWTO USE IT?

Set the parameters on the **Save technical data as HTML** window, go to **File > Save HTML setup** and under directory **data/looms** insert the layout name and put **.arahne** at the end of the filename, for example: Warping.arahne, Commercial.arahne, etc.



Already saved HTML Setup can be loaded immediately from **Choose** menu.



WARPING HTML DATA SHEET



BRACCIANO 47

Warp threads: 6536

Warp pattern 108 x Repeat(60) + 56 Leftover

1	b	Fiordaliso	80/2 NeC	300 S	1	
2	a	bianco ordito	80/2 NeC	300 S	2, 3	9 x (4) = 36
2	b	Fiordaliso	80/2 NeC	300 S	4, 1	
2	a	bianco ordito	80/2 NeC	300 S	2, 3	
1	b	Fiordaliso	80/2 NeC	300 S	4	
6	a	bianco ordito	80/2 NeC	300 S	1, 2, 3, 4, 5, 6	
2	c	Caffé	40/3 NeC	300 S	7, 11	
4	b	Fiordaliso	80/2 NeC	300 S	2(3, 2)	
2	c	Caffé	40/3 NeC	300 S	12, 8	
6	a	bianco ordito	80/2 NeC	300 S	9, 10, 1, 2, 3, 4	
60						

Warp	Repeat threads	Design threads	Repeat %	Weight %	Total kg
A	32	3484	53.33	47.03	16.773
B	24	2616	40.00	35.31	12.594
C	4	436	6.67	17.66	6.297
Total	56+108*60	=6536			=35.664

Warp	A	B	C
Count	80/2 NeC	80/2 NeC	40/3 NeC
Twists/(m)	300 S	300 S	300 S
1	bianco ordito	Fiordaliso	Caffé

Threads in fabric width: 6536

Number of sections: 0

Reed number (Dents/1 cm): 72

Denting (ends/dent): 3

Warp beam width (cm): 140

COMMERCIAL HTML DATA SHEET

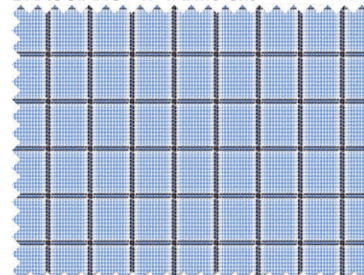


BRACCIANO 47

Warp length	300 m
Raw length	288 m
Fabric length	271.7 m
Raw width	160 cm
Finished width	150 cm
Warp threads	6536
Density Warp	43.57 / 1 cm
Density Weft (Loom)	32 / 1 cm
Density Weft (Raw)	34.46 / 1 cm
Density Weft (Finished)	36.53 / 1 cm
Weft Total	56
Ground	52
Regulator	4
Consumption	66.51 kg

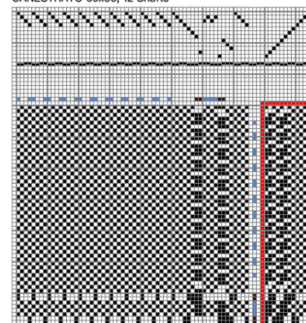
CAD filename/Volumes/server/data/fabrics/paganini/BRACCIANO 47			
Reed number	Reed width	Denting	Dents
18 / 1 cm	169.44 cm	22(2) 4(3) 2(2)	3050

BRACCIANO 47 1.4x1.5 cm



Warp	A 80/2 NeC 300 S	B 80/2 NeC 300 S	C 40/3 NeC 300 S
	bianco ordito	Fiordaliso	Caffé
Weft	a 40/1 NeC 300 S	b 40/1 NeC 300 S	c 40/3 NeC 300 S
	bianco ordito	Fiordaliso	Caffé

CANESTRATO 60x56; 12 Shafts



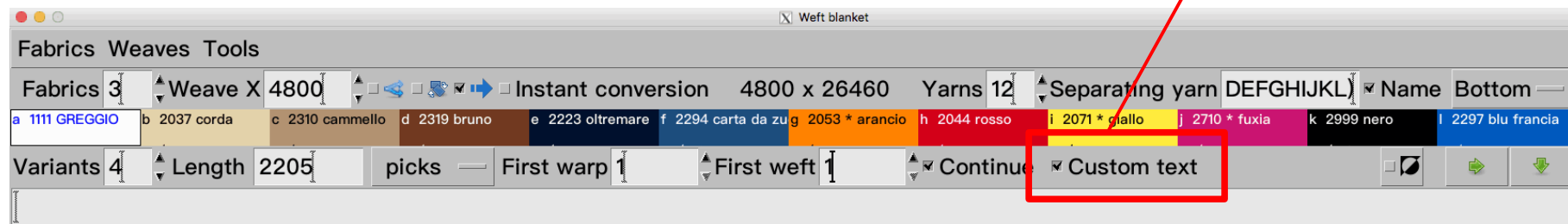
20. CUSTOM TEXT IN WEFT BLANKET

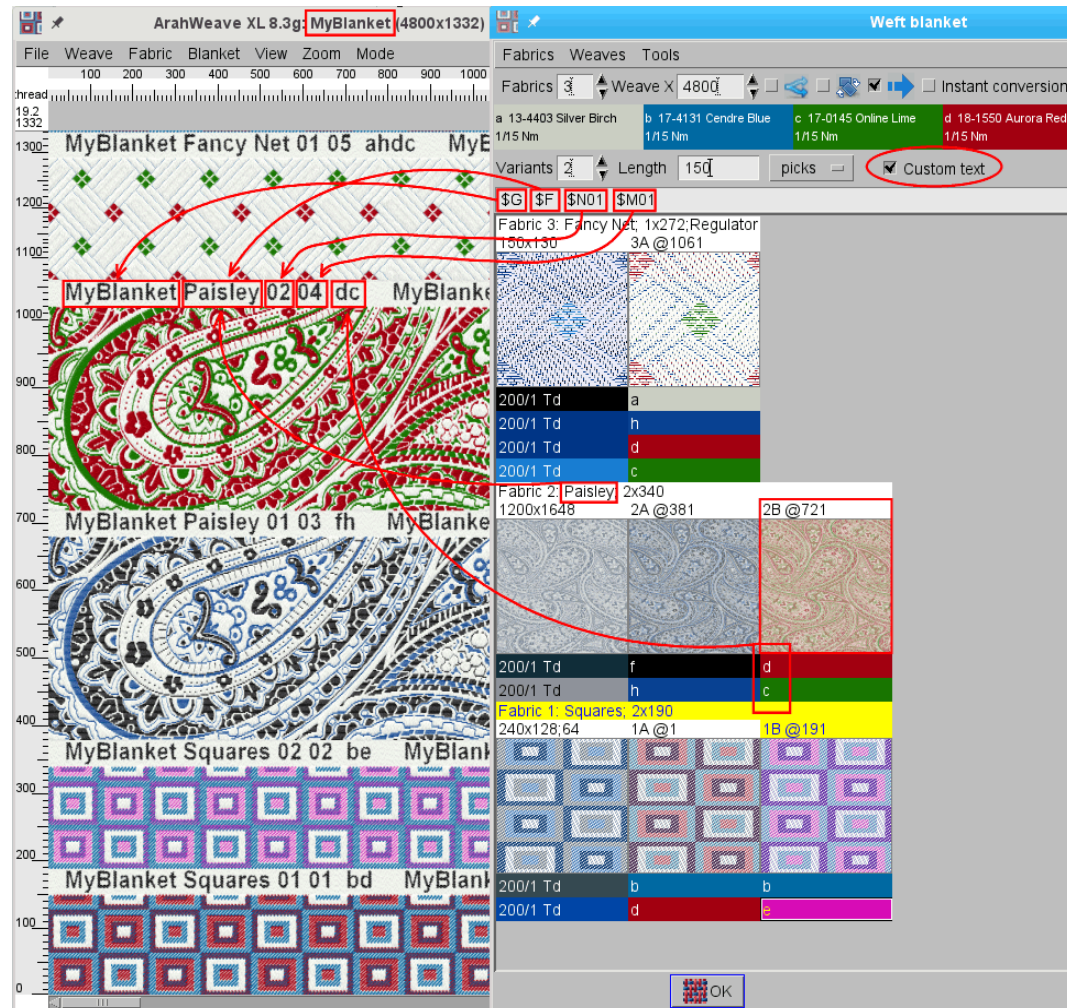
WHAT DOES IT DO?

You can add custom text inside the separating area between different patterns. The inserted text will be woven in the separating area on the fabric. In this way, the samples passed to the customers do not need a written tag, which may detach or get mixed up. Customer can read the woven header and you know exactly which design and color variant they have ordered.

WHERE?

Go to **Blanket > Weft blanket** and enable **Custom text**.





21. NEW ARAHWEAVE VIDEO TUTORIALS

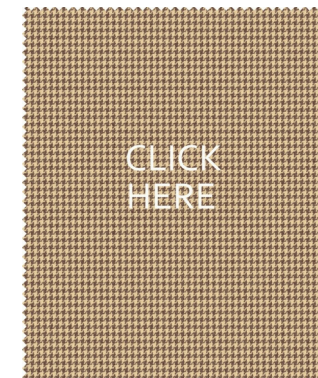
DONEGAL TWEED FABRIC DESIGN



JACQUARD DESIGN IN 5 MINUTES



DOUBLE FABRIC DESIGN



FABRIC COLOR VARIANTS



SAVE JACQUARD CARDS FOR PRODUCTION



ARAHPAINT

1. WORK WITH TRANSPARENT IMAGES

WHAT DOES IT DO?

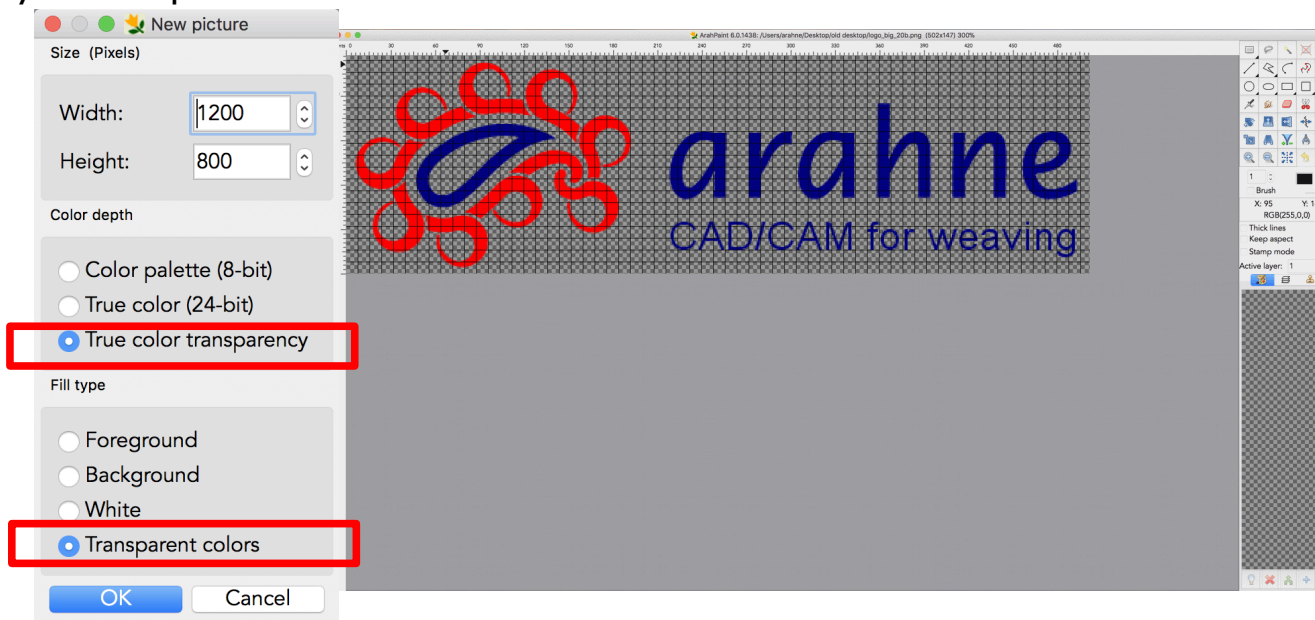
ArahPaint6 supports working with transparent images (RGBA format).

WHERE?

Go to **File > New Picture**.

HOWTO USE IT?

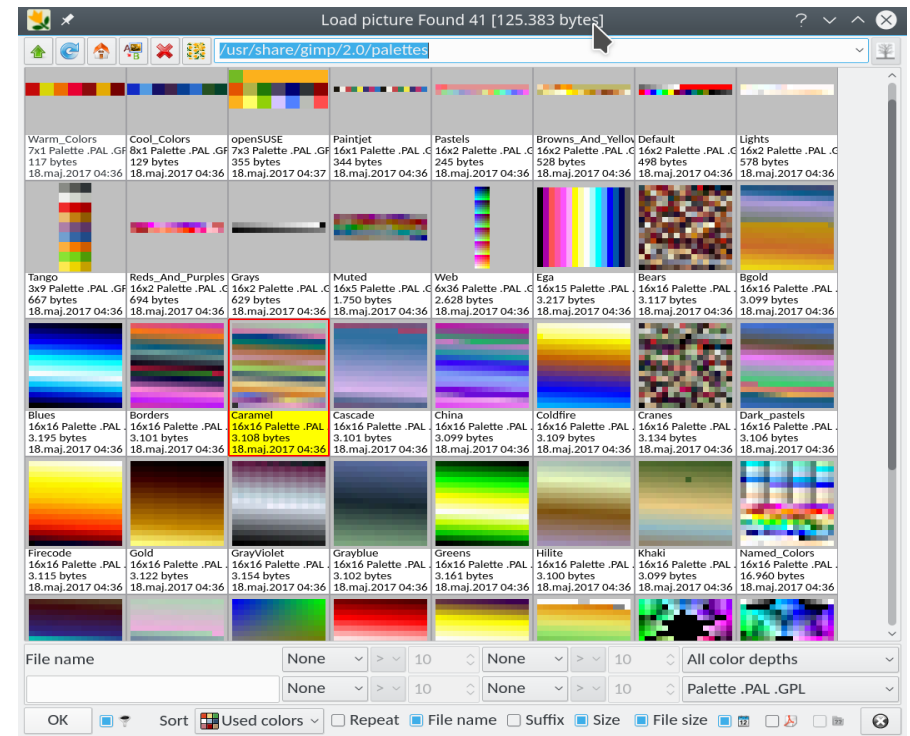
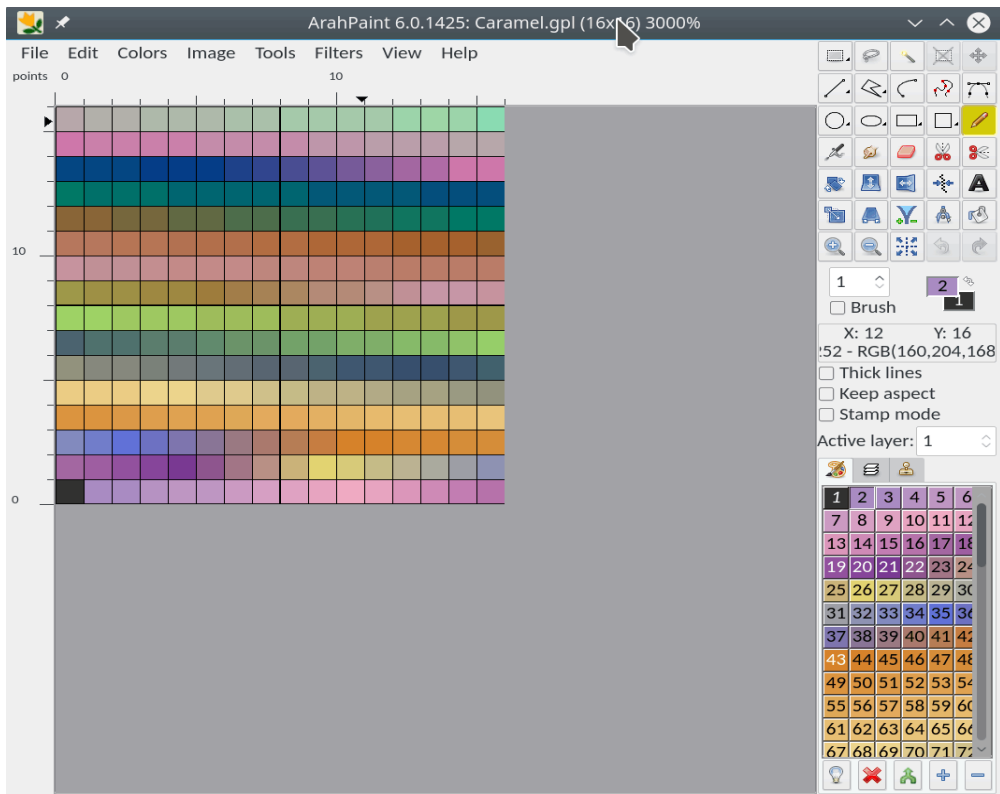
Select **True color transparency** and **Transparent colors**.



2. LOAD COLOR PALETTES AS IMAGES

WHAT DOES IT DO?

Loads color palettes as images in Paint Shop Pro's .PAL and in Gimp's .GPL format. If you want to map an image to a specific color palette, use **Colors > Load colormap from image**.

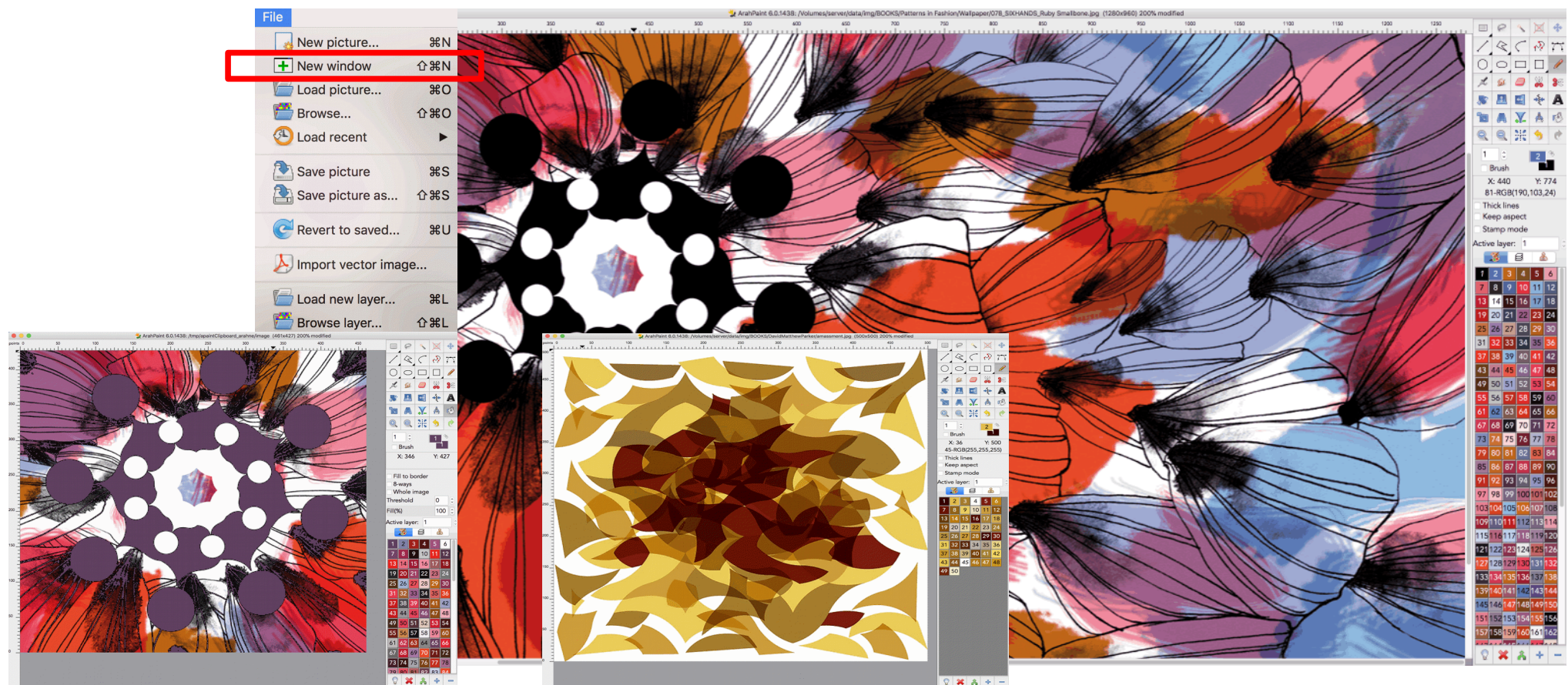


3. MULTI DOCUMENT SUPPORT

WHAT DOES IT DO?

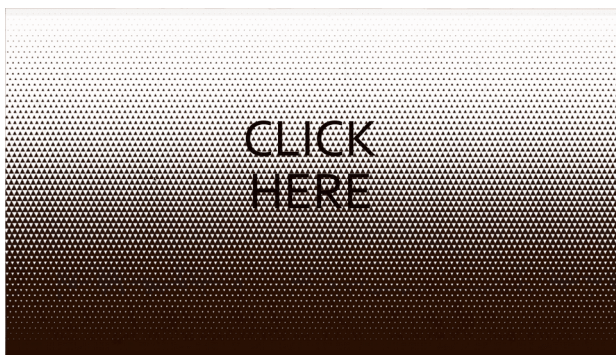
In ArahPaint6 in Mac OSX you can open several windows to work with different images at same time.

WHERE? Go to **File > New window**.



4. NEW ARAHPAINT VIDEO TUTORIALS

DESIGN WITH CONTOUR TOOLS



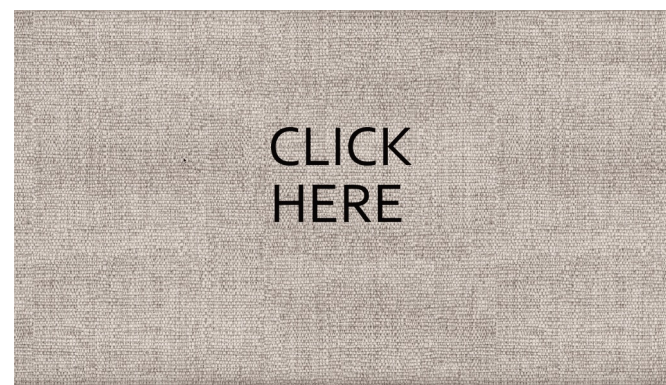
DESIGN WITH CONTOURS AND GRADIENT FILTER



CREATE SEAMLESS REPEAT FROM PHOTOGRAPHED OR SCANNED FABRIC



CREATE SEAMLESS REPEAT FROM PHOTOGRAPHED OR SCANNED FABRIC



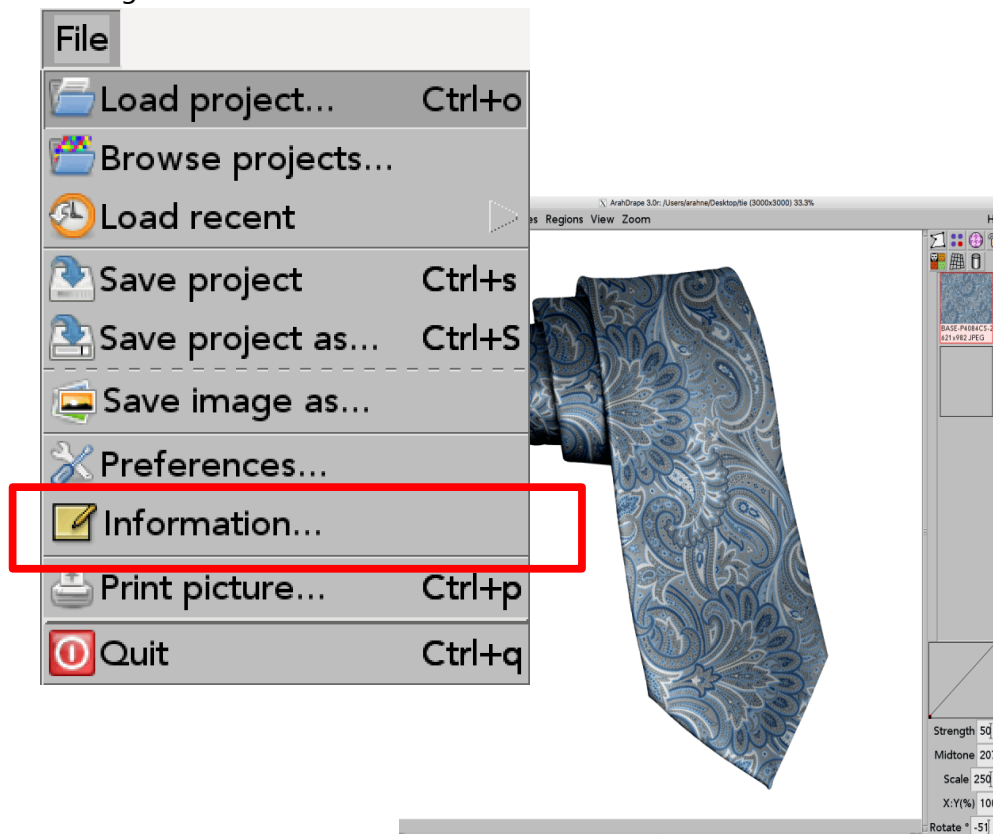
ARAHDRAPÉ

1. AUTOMATIC LABELS

WHAT DOES IT DO?

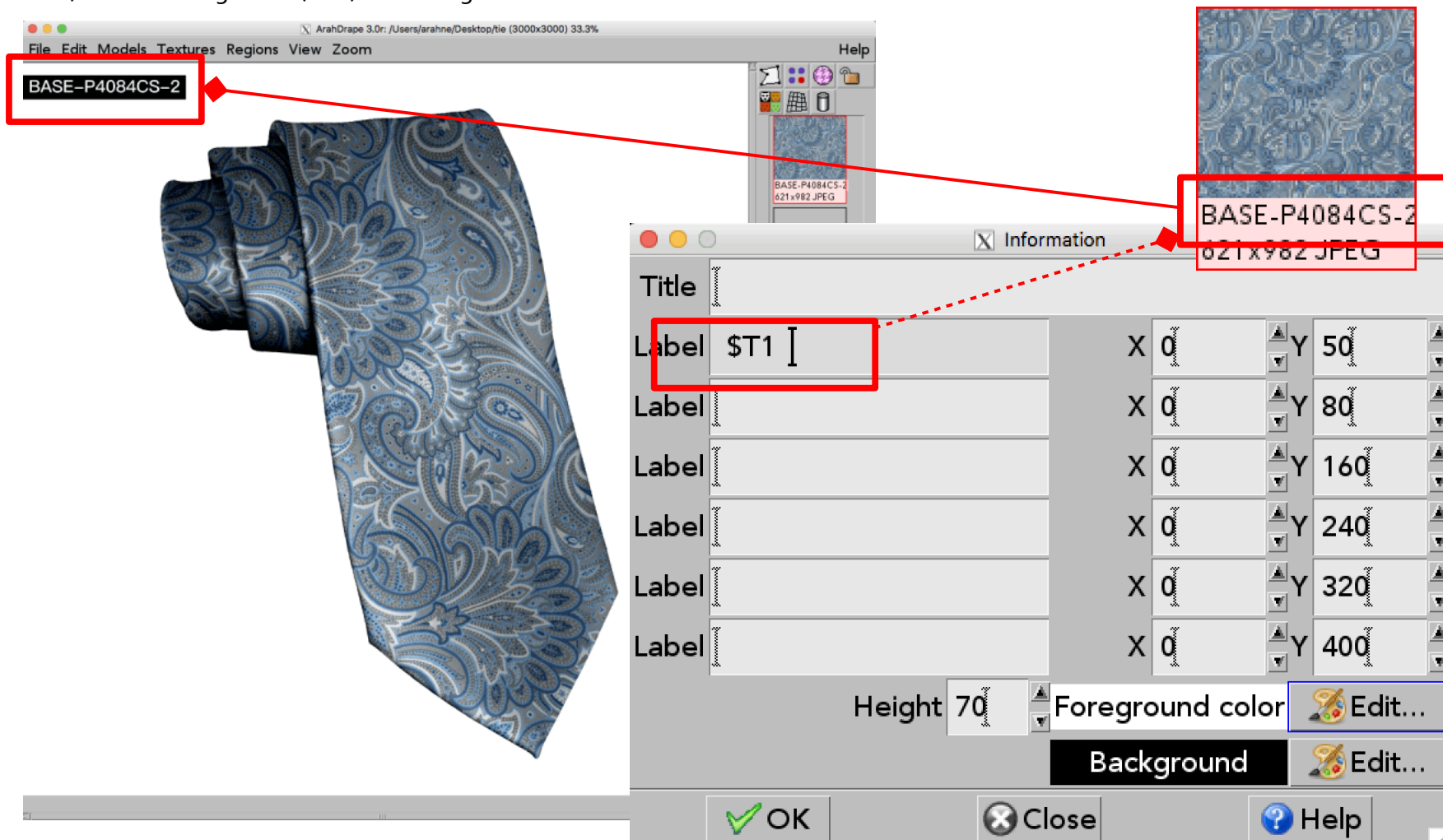
ArahDrape supports automatic labels. You can place 6 custom labels anywhere on the draped image. Texture name is extracted from the filename. It is very useful for large quantities of images, when using batch function.

WHERE? Go to **File > Information**.



HOWTO USE IT?

In the **Information** window insert \$T1 and the software will create the label by taking the filename from the first texture. If we want to add the second label (texture name), under second Label insert \$T2 and so on. Set also the label parameters such as text Height, the position of the label on the image (X and Y) and the foreground (text) and background color.





BASE-TZ30004157-7



BASE-P3004CS-2-1



TJZ32193-I1



868932-D

By using **BATCH FUNCTION**, IMAGES ARE SAVED AUTOMATICALLY WITH CORRESPONDING TEXTURE FILENAME LABEL.



BASE-QD42898-1-1



BASE-P4084CS-2



BASE-KB12889BL-6



BASE-P4084CS-1

2. ADD CUSTOM BACKGROUND COLOR

WHAT DOES IT DO?

When working with transparent images, you can add a customized background color.

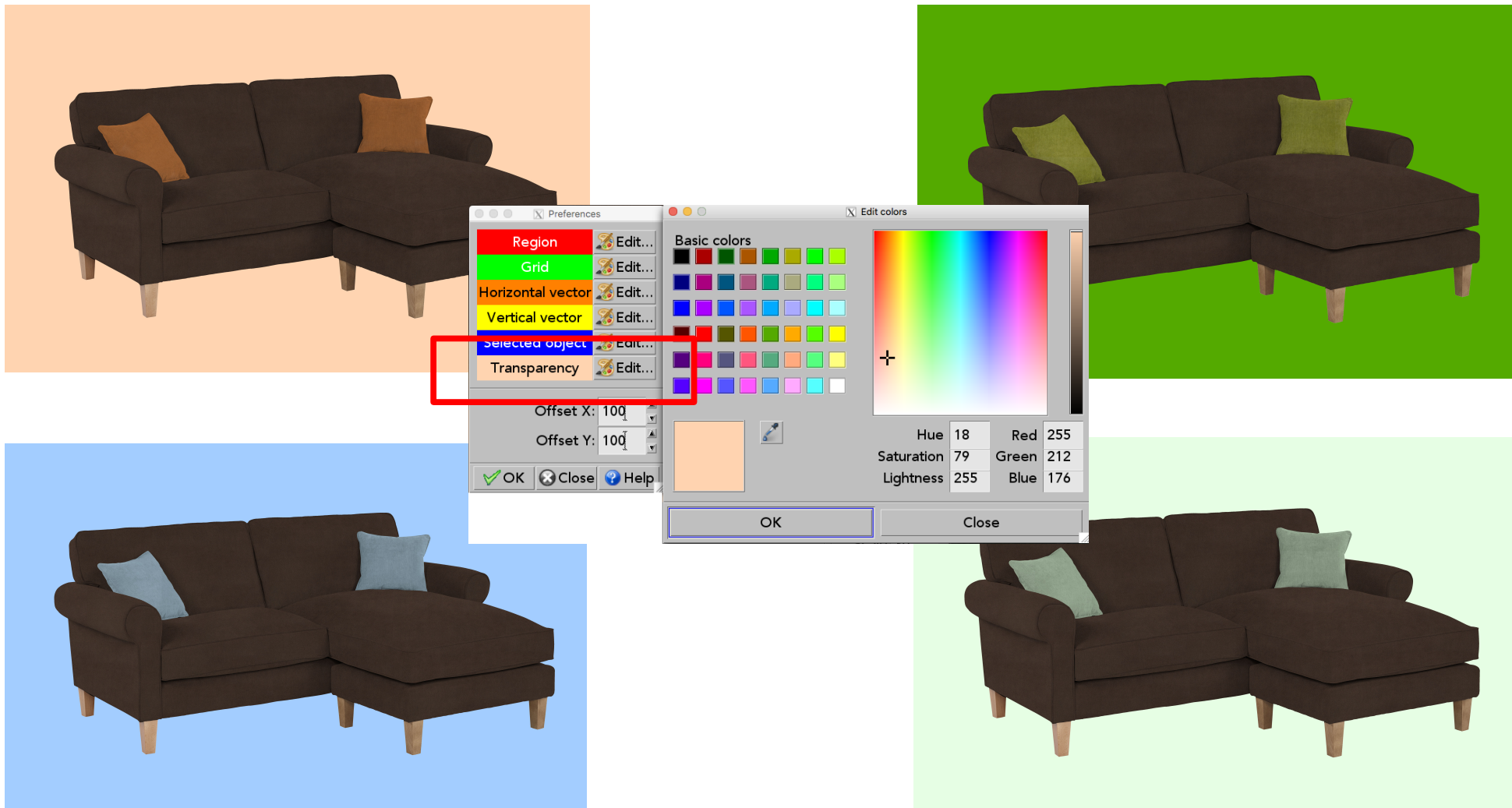
WHERE?

Go to **View > Transparency** and select **custom**.



HOWTO USE IT?

To change the custom color, go to **File > Preferences**, under **Transparency** click on the **Edit** icon and select the color.



NEW APP: TABLET BASED DIGITAL FABRIC CATALOGUE

[Tekstina](#) needed a system to show their new fabric collection at the fair, and collect the orders for samples. So we have made a tablet based system, which does all that in a visual way. It is so simple, that customers can place their own orders. Click on the image below to see the video!

